

Parallels[®] Pro Control Panel

Parallels Pro Control Panel 10.3.1 for Windows Technical Reference Guide

Legal and Copyright Notice

ISBN: N/A

Parallels

660 SW 39th Street

Suite 205

Renton, Washington 98057

USA

Phone: +1 (425) 282 6400

Fax: +1 (425) 282 6444

© Copyright 2007 Ensim Corporation. All rights reserved.

© Copyright 2008 Parallels, Inc. All rights reserved.

Distribution of this work or derivative of this work in any form is prohibited unless prior written permission is obtained from the copyright holder.

Product and service names mentioned herein are the trademarks of their respective owners.

Contents

Preface	5
Typographical Conventions	5
Feedback and Support	6
About this Guide	7
Intended Audience and Required Skills.....	8
Related Documentation	8
Online Help	8
Command Line Interface (CLI) Calls	9
How to Execute CLI Calls	10
Overview of Command Line Interface (CLI) Calls	11
Adding an Object	12
Adding a Reseller	13
Adding a Site	14
Adding a User Template.....	15
Description of Parameters Used for Creating a User Template and Updating a User	16
Adding a User.....	18
Adding a Microsoft SQL Server 2005 Database	19
Adding a Database Tool.....	20
Adding a Skin	21
Deleting an Object	21
Deleting a Reseller	22
Deleting a Site	23
Deleting a User Template.....	23
Deleting a User.....	24
Deleting a Microsoft SQL Server 2005 Database	25
Deleting a Database Tool.....	26
Deleting a Skin	27
Suspending an Object	27
Suspending a Reseller	28
Suspending a Site	29
Displaying the Information of an Object.....	29
Displaying the Information of a Reseller	30
Displaying the Information of a Site	31
Displaying the List of Database Tools.....	32
Updating the Information of an Object.....	32
Updating the Information of a Reseller.....	33
Updating the Information of a Site.....	35
Description of Parameters Used for Updating a Site	39
Updating the Information of a User	46
Updating a Skin	48
Updating the Percent Quota Usage Threshold	49
Updating the Parallels Pro Control Panel License	50
Updating the Encoding Type for Sending Emails.....	50
Exporting and Importing Site Information	51
Exporting Site Information	52
Importing Site Information	52

Changing the Network Settings of Your Server 54

Changing the Network Settings of Parallels Pro Control Panel Server	55
Using the Graphical Interface (Networkconfiguration.exe)	56
Using the Command Line Interface (NetworkconfigurationCLI.exe).....	59
Adding a New IP Address to Your Server's Network Card.....	60

Integrating Custom Scripts With Parallels Pro Control Panel 61

About the Custom Scripts	62
Before You Integrate the Custom Scripts	62
Enabling the Custom Scripts Integration Feature.....	63

Glossary 64

Preface

In this section:

Typographical Conventions	5
Feedback and Support	6

Typographical Conventions

Before you start using this guide, it is important to understand the documentation conventions used in it.

The following kinds of formatting in the text identify special information.

<u>Formatting convention</u>	<u>Type of Information</u>	<u>Example</u>
Special Bold	Items you must select, such as menu options, command buttons, or items in a list. Titles of chapters, sections, and subsections.	Go to the System tab. Read the Basic Administration chapter.
<i>Italics</i>	Used to emphasize the importance of a point, to introduce a term or to designate a command line placeholder, which is to be replaced with a real name or value.	The system supports the so called <i>wildcard character</i> search.
Monospace	The names of commands, files, directories, and domain names.	The license file is located in the <code>http://docs/common/licenses</code> directory.

Preformatted	On-screen computer output in your command-line sessions; source code in XML, C++, or other programming languages.	<pre># ls -al /files total 14470</pre>
Preformatted Bold	What you type, contrasted with on-screen computer output.	<pre># cd /root/rpms/php</pre>
CAPITALS	Names of keys on the keyboard.	SHIFT, CTRL, ALT
KEY+KEY	Key combinations for which the user must press and hold down one key and then press another.	CTRL+P, ALT+F4

Feedback and Support

To take advantage of Parallels Pro Control Panel (formerly known as Ensim Pro) support services or to find additional product documentation, visit Parallels Pro Control Panel Online Support at <http://www.parallels.com/en/support/pro/>.

To log in to Parallels Pro Control Panel online support, submit the form at <https://www.parallels.com/en/support/ensimpro/form/>.

If you have found a mistake in this guide, or if you have suggestions or ideas on how to improve this guide, please send your feedback using the online form at <http://www.parallels.com/en/support/usersdoc/>. Please include in your report the guide's title, chapter and section titles, and the fragment of text in which you have found an error.

About this Guide

This guide provides information on the Command Line Interface (CLI) commands included in Parallels Pro Control Panel 10.3.1 for Windows 2003 (formerly known as Ensim Pro for Windows 2003). It also provides instructions for changing the network settings of your server.

Note: For simplicity, we refer to Parallels Pro Control Panel 10.3.1 for Windows 2003 as “Parallels Pro Control Panel” throughout this document.

Note: This guide is updated as new information becomes available. Before you begin, be sure to check the Parallels Pro Control Panel for Windows documentation section of the Parallels Pro Control Panel Support Site, <http://www.parallels.com/support/pro/>, to make sure you have the latest version of the guide. The date on the title page indicates the version; changes, if any, are recorded in the document revision history.

In this chapter:

Intended Audience and Required Skills	8
Related Documentation	8
Online Help	8

Intended Audience and Required Skills

This guide is meant for advanced users of Parallels Pro Control Panel, including system administrators and technical support staff of Internet service providers (ISPs) who are using Parallels Pro Control Panel.


To use this guide, you need to be familiar with the working of Parallels Pro Control Panel. In addition, you should have some or all of the following skills.

- Using the Windows 2003 command prompt
- Understanding of HTML and DTML

Related Documentation

For a list of related documentation, see the Parallels Pro Control Panel for Windows release notes. Documentation is also available in the Parallels Pro Control Panel for Windows section of the Parallels Pro Control Panel Support site, <http://www.parallels.com/support/pro/>. All customers receive passwords that allow access to this site. If you do not have a password, contact your organization's liaison to Parallels Pro Control Panel.

Online Help

The Parallels Pro Control Panel provides comprehensive online Help designed to answer questions and help you find the information you need, when you need it. To access online Help, log in to the control panel, then click the Help links on the lower left navigation panel. To get help for a specific page, click  on the upper right side of forms.

Command Line Interface (CLI) Calls

This section describes the Command Line Interface (CLI) calls that you can use to create, edit, view, and delete resellers, sites, users, or user templates on the Parallels Pro Control Panel server. You can also use the CLI calls to export and import site information, and update the Parallels Pro Control Panel license. Instead of logging on to the Parallels Pro Control Panel to run the functions described above, these calls can be executed directly from the command line.

In this chapter:

How to Execute CLI Calls	10
Overview of Command Line Interface (CLI) Calls	11
Adding an Object	12
Deleting an Object	21
Suspending an Object	27
Displaying the Information of an Object	29
Updating the Information of an Object	32
Exporting and Importing Site Information	51

How to Execute CLI Calls

This section includes instructions on how to use the CLI calls directly from the command line.

➤ **To execute CLI calls:**

- 1 Use a Terminal Services Client like **Remote Desktop Connection** to start a session on a Microsoft Windows 2003 server running Parallels Pro Control Panel.
- 2 In your terminal services session, open a command prompt window, then change to the directory where the CLI program files are located. For example, if you have installed Parallels Pro Control Panel in the default **Program Files** directory, then run the following command at the prompt.

```
cd C:\Program Files\Ensim\WEBppliance\cli
```

- 3 Since all the arguments passed to the calls are in XML (eXtensible Markup Language) format, create an XML file using a standard text editor. This file will include all the arguments necessary for running the call successfully.

Note: You have two options available with each call: the “-f” (file) option and the “-s” (string) option. These two options are mutually exclusive; so you can use either one. The “-f” option allows you to specify the complete path where the XML file is located, while the “-s” option allows you to enter the XML data as a string directly on the command line.

We recommend that you create the XML file, save it, then use the “-f” option of the call to specify the location of this file. If you use the “-s” option, you cannot use line breaks in the XML data since the entire XML data must be specified on a single line.

- 4 Run the calls with the parameters described in this guide and the results will be displayed accordingly.

Important: Each call described in this guide includes an example of the XML file it needs to execute. DO NOT CHANGE THE FORMAT OF THE XML FILE WHILE CREATING IT. You can replace the values of the parameters given in these examples.

If the values passed in the XML file are invalid, then the call fails with an error.

Overview of Command Line Interface (CLI) Calls

This section describes the various calls that you can use to create, edit, view, and delete resellers, sites, or users directly from the command line. It also describes the calls to export and import site information. The nine CLI calls located in the `cli` directory as executables are as follows:

- `ADDOBJ.EXE`: Adds an object such as a reseller, a site or a user to the Parallels Pro Control Panel database.
- `DELETEOBJ.EXE`: Deletes an object from the Parallels Pro Control Panel database.
- `GETINFOOBJ.EXE`: Displays the configuration of an object.
- `UPDATEOBJ.EXE`: Updates the information for an object.
- `SUSPENDOBJ.EXE`: Suspends the user access to the the control panel and its services
- `EXPORTOBJ.EXE`: Exports the site information from the Parallels Pro Control Panel to a directory on the same server.
- `IMPORTOBJ.EXE`: Imports the site information from its export directory to the Parallels Pro Control Panel.
- `UPDATELICENSE.EXE`: Updates the Parallels Pro Control Panel license.

`SETCONFIG.EXE`: Allows the service provider to update the quota usage threshold The syntax for running the above calls is similar, and is as follows:

- When the arguments are passed in the form of an XML file:

```
<call_name> -t <org / reseller / user / usertemplate /
updatelicense | mssqldb | dbtool | setconfig | suspendorg |
suspendreseller> -f <location_of_XML_file> -u <parent_username> -p
<parent_password> [-q]
```

where, `<parent_username>` and `<parent_password>` refer to the login information of the parent administrator for that specific site, reseller, user, or user template. This login information is used by the parent administrator to log in to the Parallels Pro Control Panel. For example, if you want to create a site that belongs to a reseller, then the login information of that reseller should be specified in the command.

Here, the `-q` option is for running the calls in quiet mode.

While running the CLI call with the `updatelicense` parameters `<parent_username>` and `<parent_password>`, refer to the login information of the server administrator.

To view the information of a reseller, run the following command using the “-f” option.

```
GetInfoObj.exe -t reseller -f
C:\wwpcli\xml\getresellerinfo.xml -u admin -p ensimpro
```

where `getresellerinfo.xml` is an XML file containing all the parameters required to execute `GetInfoObj.exe` and located in the `C:\wwpcli\xml` directory.

- When the arguments are passed in the form of a string containing XML data:

```
<call_name> -t <org / reseller / user / usertemplate /
updatelicense | mssqldb | dbtool | setconfig | suspendorg |
suspendreseller> -s <XML_data_as_a_string> -u <parent_username> -p
<parent_password> [-q]
```

Here, the `-q` option is for running the calls in quiet mode.

To view the information for a reseller “res1.com”, run the following command using the “-s” option.

```
GetInfoObj.exe -t reseller -s "<?xml version='1.0'
encoding='utf-8' ?><reseller><property
name='Name'>res1.com</property><property
name='ShortName'>res1sn</property></reseller>" -u admin -p
ensimpro
```

where the string `<?xml version='1.0' encoding='utf-8' ?><reseller><property name='Name'>res1.com</property><property name='ShortName'>res1sn</property></reseller>` contains all the parameters required to execute `GetInfoObj.exe` in XML format. Please note that the string is enclosed in double quotes (“”) and the tag values in single quotes (‘’).

Adding an Object

Call Name: `addobj.exe`

Description: Adds an object such as a reseller, a site, a user template, a user, a Microsoft SQL Server 2005 database, a database tool or a skin to Parallels Pro Control Panel.

Important: Before running this call for a reseller or a site, the Parallels Pro Control Panel must contain a template for adding a new reseller or site. If a template does not exist, you must create a new template using the Parallels Pro Control Panel. For instructions on creating a new template, please refer to the online Help available in the Parallels Pro Control Panel by clicking **General Help** in the *Help* section on the left navigation panel.

In this section:

Adding a Reseller	13	
Adding a Site	14	
Adding a User Template.....	15	
Description of Parameters Used for Creating a User Template and Updating a User		16
Adding a User	18	
Adding a Microsoft SQL Server 2005 Database	19	
Adding a Database Tool.....	20	
Adding a Skin	21	

Adding a Reseller

Syntax:

- When the arguments are passed in the form of an XML file:


```
addobj.exe -t reseller -f <location_of_XML_file> -u <parent_username>
-p <parent_password>
```
- When the arguments are passed in the form of a string containing XML data:


```
addobj.exe -t reseller -s <XML_data_as_a_string> -u <parent_username>
-p <parent_password>
```

Arguments:

The parameters to be passed in the XML file for adding a reseller are given below.

```
<?xml version="1.0" encoding="utf-8" ?>
<reseller>
  <generalinfo>
    <property name="DisplayName">res1 name</property>
    <property name="Name">res1.com</property>
    <property name="ShortName">res1sn</property>
    <property name="TemplateName">resellerplan</property>
    <property name="ContactPhone">12345678</property>
    <property name="ContactEmail">abc@example.org</property>
  </generalinfo>
  <admin>
    <property name="FullName">Administrator</property>
    <property name="UserName">admin</property>
    <property name="Password">ensimpro</property>
    <property name="Email">xyz@example.org</property>
  </admin>
</reseller>
```

Adding a Site

Syntax:

- When the arguments are passed in the form of an XML file:


```
addobj.exe -t org -f <location_of_XML_file> -u <parent_username> -p
<parent_password>
```
- When the arguments are passed in the form of a string containing XML data:


```
addobj.exe -t org -s <XML_data_as_a_string> -u <parent_username> -p
<parent_password>
```

Arguments:

The parameters to be passed in the XML file for adding a site are given below.

```
<?xml version="1.0" encoding="utf-8" ?>
<org>
  <generalinfo>
    <property name="DisplayName">site1 name</property>
    <property name="Name">site1.com</property>
    <property name="ShortName">site1sn</property>
    <property name="TemplateName">test</property>
    <property name="ContactEmail">abc@example.org</property>
  </generalinfo>
  <admin>
    <property name="DisplayName">Administrator</property>
    <property name="UserName">admin</property>
    <property name="Password">ensimpro</property>
    <property name="Email">xyz@example.org</property>
  </admin>
  <service name="WebHosting" version="2.0.0">
    <property name="Type">ipbased</property>
    <!-- Type can be either "namebased" or "ipbased". -->
    <property name="IPSelection">XX.XX.XX.XX</property>
    <!-- IPSelection is only used in case of IP-based sites. The value can either be
    "auto" for automatic IP address selection or the IP address. Do not include this
    parameter if you are adding a name-based site. -->
  </service>
</org>
```

Adding a User Template

Syntax:

- When the arguments are passed in the form of an XML file:


```
addobj.exe -t usertemplate -f <location_of_XML_file> -u
<parent_username> -p <parent_password>
```
- When the arguments are passed in the form of a string containing XML data:


```
addobj.exe -t usertemplate -s <XML_data_as_a_string> -u
<parent_username> -p <parent_password>
```

Arguments:

The parameters to be passed in the XML file for adding a user template are given below. For a detailed description of some of the parameters given below, see the parameter description (on page 16).

```
<?xml version="1.0" encoding="utf-8" ?>
<template>
  <generalinfo>
    <property name="name">test</property>
    <property name="description">Template added using cli</property>
    <property name="enabled">>true</property>
    <property name="shortname">site1sn</property>
    <!-- shortname refers to the short name of the site to which this user template
    needs to be added. -->
  </generalinfo>
  <service name="WebHosting" version="2.0.0">
    <ServiceComponent name="w3svc" version="2.0.0" enabled="1">
      </ServiceComponent>
    <ServiceComponent name="msftpsvc" version="2.0.0"
    enabled="1">
      <property name="IISPermRead"
      type="System.boolean">true</property>
      <property name="IISPermWrite"
      type="System.boolean">>false</property>
      <property name="UserLog"
      type="System.boolean">true</property>
      <property name="ContentUploader"
      type="System.boolean">>false</property>
    </ServiceComponent>
```

```

<ServiceComponent name="frontpage" version="2.0.0"
enabled="1">
  <property name="ContentUploader"
type="System.boolean">false</property>
</ServiceComponent>
<ServiceComponent name="mail" version="1.5.0" enabled="1">
  <property name="UserEnableWebAccess"
type="System.boolean">false</property>
  <property name="UserEnableForwards"
type="System.boolean">false</property>
  <property name="UserEnableAutoresponders"
type="System.boolean">false</property>
</ServiceComponent>
</service>
</template>

```

Description of Parameters Used for Creating a User Template and Updating a User

This section describes some of the parameters that are included in the XML files and passed to `addobj.exe` for creating a user template, and `UpdateObj.exe` for updating a user. The following table describes the parameters included in the `ServiceComponent` sections used in the XML files.

➤ **Description of parameters used for creating a user template and updating a user:**

Parameters	Type	Description of the parameter	Default value
SERVICECOMPONENT NAME: MSFTPSVC			
IISPermRead	Boolean	Enable read permission for IIS files	Must be manually specified as either true or false
IISPermWrite	Boolean	Enable write permission for IIS files	Must be manually specified as either true or false
UserLog	Boolean	Enable logging of user visits to the FTP site	Must be manually specified as either true or false
ContentUploader	Boolean	Allow user to access the site's Web site	Must be manually specified as either true or false

Parameters	Type	Description of the parameter	Default value
SERVICECOMPONENT NAME: FRONTPAGE			
ContentUploader	Boolean	Allow user to access the site's Web site	Must be manually specified as either true or false
SERVICECOMPONENT NAME: MAIL			
UserEnableWebAccess	Boolean	Enable Web access to the user	Must be manually specified as either true or false
UserEnableForwards	Boolean	Enable forwards for the user	Must be manually specified as either true or false
UserEnableAutoresponders	Boolean	Enable autoresponders for the user	Must be manually specified as either true or false

Adding a User

Syntax:

- When the arguments are passed in the form of an XML file:


```
addobj.exe -t user -f <location_of_XML_file> -u <parent_username> -p <parent_password>
```
- When the arguments are passed in the form of a string containing XML data:


```
addobj.exe -t user -s <XML_data_as_a_string> -u <parent_username> -p <parent_password>
```

Arguments:

The parameters to be passed in the XML file for adding a user are given below.

Note: The parameters that do not have a value specified below are **optional**, and therefore these tags can have **empty** values.

```
<?xml version="1.0" encoding="utf-8" ?>
<user>
  <property name="username">user1</property>
  <property name="password">ensimpro</property>
  <property name="template">test</property>
  <property name="firstname"></property>
  <property name="middlename"></property>
  <property name="lastname"></property>
  <property name="admin"></property>
  <property name="email"></property>
  <property name="phone"></property>
  <property name="description"></property>
  <property name="enabled">>true</property>
  <property name="street"></property>
  <property name="city"></property>
  <property name="state"></property>
  <property name="country"></property>
  <!-- country should include the two-character alphabetic country code. For example,
  if you want to set country to United States, then specify US as its value. -->
  <property name="company"></property>
  <property name="department"></property>
  <property name="office"></property>
```

```

    <property name="shortname">site1sn</property>
    <!-- shortname refers to the short name of the site to which this user needs to be
    added. -->

</user>

```

Adding a Microsoft SQL Server 2005 Database

Note: For successful Microsoft SQL Server 2005 database creation, the server administrator must select the option **enable database management** during site creation.

Syntax:

- When the arguments are passed in the form of an XML file:


```
addobj.exe -t database -f <location_of_XML_file> -u <parent_username>
-p <parent_password>
```
- When the arguments are passed in the form of a string containing XML data:


```
addobj.exe -t database -s <XML_data_as_a_string> -u <parent_username>
-p <parent_password>
```

Arguments:

The parameters to be passed in the XML file for adding a user are given below.

```

<?xml version="1.0" encoding="utf-8" ?>
<mssqldb>

<property name="databasename">Siteadmindatabase</property>
<!-- The name of the database to add-->

<property name="sitename">site.com</property>
<!-- Site's short name-->

</mssqldb>

```

Adding a Database Tool

Note: You CANNOT use phpMyAdmin as a tool name as this is the default tool provided by Parallels Pro Control Panel.

Syntax:

- When the arguments are passed in the form of an XML file:

```
addobj.exe -t dbtool -f <location_of_XML_file> -u <parent_username> -p  
<parent_password>
```

- When the arguments are passed in the form of a string containing XML data:

```
addobj.exe -t dbtool -s <XML_data_as_a_string> -u <parent_username> -  
p <parent_password>
```

Arguments:

The parameters to be passed in the XML file for adding a user are given below.

```
<?xml version="1.0" encoding="utf-8" ?>  
<databasetool>  
<property name="toolname">clitooladd</property>  
<property name="tooltype">Microsoft SQL Server 2005</property>  
<!-- tooltype must have one of the following two values,"Microsoft SQL Server 2005" or  
"MySQL" -->  
<property name="target">http://10.70.114.1/clitooladd2k5</property>  
<!-- the IP address location where the tool is located -->  
<property name="helptarget">http://10.70.114.1/clitooladd2k5/help</property>  
<!-- the IP address location where the help for the tool is located -->  
</databasetool>
```

Adding a Skin

Syntax:

- When the arguments are passed in the form of an XML file:


```
addobj.exe -t skin -f <location_of_XML_file> -u <parent_username> -p <parent_password>
```
- When the arguments are passed in the form of a string containing XML data:


```
addobj.exe -t skin -s <XML_data_as_a_string> -u <parent_username> -p <parent_password>
```

Arguments:

The parameters to be passed in the XML file for adding a skin are given below.

```
<skin>
<property name="skinname"></property>
<property name="cssfilepath"></property>
<property name="zipfilepath"></property>
</skin>
```

Deleting an Object

Call Name: DeleteObj.exe

Description: Deletes an object such as a reseller, a site, a user template, a user, a Microsoft SQL Server 2005 database, a database tool or a skin.

In this section:

Deleting a Reseller	22
Deleting a Site	23
Deleting a User Template	23
Deleting a User	24
Deleting a Microsoft SQL Server 2005 Database	25
Deleting a Database Tool	26
Deleting a Skin	27

Deleting a Reseller

Syntax:

- When the arguments are passed in the form of an XML file:
`DeleteObj.exe -t reseller -f <location_of_XML_file> -u <parent_username> -p <parent_password>`
- When the arguments are passed in the form of a string containing XML data:
`DeleteObj.exe -t reseller -s <XML_data_as_a_string> -u <parent_username> -p <parent_password>`

Arguments:

The parameters to be passed in the XML file for deleting a reseller are given below.

```
<?xml version="1.0" encoding="utf-8" ?>
<reseller>
  <property name="Name">res1.com</property>
  <property name="ShortName">res1sn</property>
</reseller>
```

Deleting a Site

Syntax:

- When the arguments are passed in the form of an XML file:


```
DeleteObj.exe -t org -f <location_of_XML_file> -u <parent_username> -p <parent_password>
```
- When the arguments are passed in the form of a string containing XML data:


```
DeleteObj.exe -t org -s <XML_data_as_a_string> -u <parent_username> -p <parent_password>
```

Arguments:

The parameters to be passed in the XML file for deleting a site are given below.

```
<?xml version="1.0" encoding="utf-8" ?>
<org>
  <property name="Name">site1.com</property>
  <property name="ShortName">site1sn</property>
</org>
```

Deleting a User Template

Syntax:

- When the arguments are passed in the form of an XML file:


```
DeleteObj.exe -t usertemplate -f <location_of_XML_file> -u <parent_username> -p <parent_password>
```
- When the arguments are passed in the form of a string containing XML data:


```
DeleteObj.exe -t usertemplate -s <XML_data_as_a_string> -u <parent_username> -p <parent_password>
```

Arguments:

The parameters to be passed in the XML file for deleting a user template are given below.

```
<?xml version="1.0" encoding="utf-8" ?>
<template>
  <property name="name">test</property>
</template>
```

Deleting a User

Syntax:

- When the arguments are passed in the form of an XML file:

```
DeleteObj.exe -t user -f <location_of_XML_file> -u <parent_username> -p  
<parent_password>
```

- When the arguments are passed in the form of a string containing XML data:

```
DeleteObj.exe -t user -s <XML_data_as_a_string> -u <parent_username> -  
p <parent_password>
```

Arguments:

The parameters to be passed in the XML file for deleting a user are given below.

```
<?xml version="1.0" encoding="utf-8" ?>  
<user>  
  <property name="name">user1@site1sn</property>  
</user>
```


Deleting a Microsoft SQL Server 2005 Database

Note: For successful Microsoft SQL Server 2005 database deletion, the server administrator must select the option **enable database management** during site creation.

Syntax:

- When the arguments are passed in the form of an XML file:

```
DeleteObj.exe -t database -f <location_of_XML_file> -u  
<parent_username> -p <parent_password>
```
- When the arguments are passed in the form of a string containing XML data:

```
DeleteObj.exe -t database -s <XML_data_as_a_string> -u  
<parent_username> -p <parent_password>
```

Arguments:

The parameters to be passed in the XML file for adding a user are given below.

```
<?xml version="1.0" encoding="utf-8" ?>  
<mssqlldb>  
  
<property name="databasename">Siteadmindatabase</property>  
<!-- The name of the database to delete-->  
  
<property name="sitename">site.com</property>  
<!-- Site's short name-->  
  
</mssqlldb>
```

Deleting a Database Tool

Syntax:

- When the arguments are passed in the form of an XML file:

```
DeleteObj.exe -t dbtool -f <location_of_XML_file> -u <parent_username>  
-p <parent_password>
```

- When the arguments are passed in the form of a string containing XML data:

```
DeleteObj.exe -t dbtool -s <XML_data_as_a_string> -u <parent_username>  
-p <parent_password>
```

Arguments:

The parameters to be passed in the XML file for deleting a user are given below.

```
<?xml version="1.0" encoding="utf-8" ?>  
<databasetool>  
<property name="toolname">clitooldelete</property>  
</databasetool>
```

Deleting a Skin

Syntax:

- When the arguments are passed in the form of an XML file:


```
DeleteObj.exe -t skin -f <location_of_XML_file> -u <parent_username> -p <parent_password>
```
- When the arguments are passed in the form of a string containing XML data:


```
DeleteObj.exe -t skin -s <XML_data_as_a_string> -u <parent_username> -p <parent_password>
```

Arguments:

The parameters to be passed in the XML file for deleting a skin are given below.

```
<?xml version="1.0" encoding="utf-8" ?>
<skin>
<property name="skinname"></property>
</skin>
```

Suspending an Object

Call Name: SuspendObj.exe

Description: Suspends an object such as reseller or a site from accessing the control panel and its services.

In this section:

Suspending a Reseller	28
Suspending a Site	29

Suspending a Reseller

Syntax:

- When the arguments are passed in form of an XML file:

```
SuspendObj.exe -t suspendreseller -f <location of xml file> -u  
<parent_username> -p <parent_password>
```
- When the arguments are passed in form of a string containing XML data:

```
SuspendObj.exe -t suspendreseller -s <XML_data_as_a_string> -u  
<parent_username> -p <parent_password>
```

Arguments:

The parameters to be passed in the XML file for suspending reseller information are given below

```
<?xml version="1.0" encoding="utf-8" ?>
<Suspend>

<property name="ResellerShortName">MyReseller.com</property>
<!-- The name of the reseller to suspend-->

<property name="AdministrativeAccess">True</property>
<!-- Set this to True to enable the reseller to log in to the reseller control panel. Set this
to False to prevent the reseller from logging in to the control panel. This setting does
not affect the reseller's customers.-->

<property name="ApplySettingsOn">1</property>
<!-- Set this value to 0,1,2 as explained below:
0 - Only reseller will get affected by the settings below.
1 - Reseller and reseller's customers (organizations and users created under the
reseller) will get affected by the settings below
2 - Reseller's customers (organizations and users created under the reseller) will
get affected by the settings below-->

<property name="IsSuspended">True</property><!-- Set this to False to
enable control panels and services. Set this to True to prevent logging in to the control
panels and using services.-->

</Suspend>
```

Suspending a Site

Syntax:

- When the arguments are passed in the form of an XML file:
`SuspendObj.exe -t suspendorg -f <location of xml file> -u
 <parent_username> -p <parent_password>`
- When the arguments are passed in the form of a string containing XML data:
`SuspendObj.exe -t suspendorg -s <XML_data_as_a_string> -u
 <parent_username> -p <parent_password>`

Arguments:

The parameters to be passed in the XML file for suspending a site information are given below

```
<Suspend>
```

```
<property name="SiteShortName">mysite.com</property>  

<!-- The name of the site to suspend-->
```

```
<property name="IsSuspended">True</property>  

<!-- Set this to False to enable control panels and services or True to prevent logging  

in to control panels or using services.-->
```

```
<property name="AdministrativeAccess">False</property>  

<!-- Set this to True to enable Site admin to log in to control panel or False to prevent  

logging in to the control panel. -->
```

```
</Suspend>
```

Displaying the Information of an Object

Call Name: GetInfoObj.exe

Description: Displays the information of an object such as a reseller, a site or database tools.

In this section:

Displaying the Information of a Reseller	30
Displaying the Information of a Site	31
Displaying the List of Database Tools.....	32

Displaying the Information of a Reseller

Syntax:

- When the arguments are passed in the form of an XML file:

```
GetInfoObj.exe -t reseller -f <location_of_XML_file> -u  
<parent_username> -p <parent_password>
```
- When the arguments are passed in the form of a string containing XML data:

```
GetInfoObj.exe -t reseller -s <XML_data_as_a_string> -u  
<parent_username> -p <parent_password>
```

Arguments:

The parameters to be passed in the XML file for displaying the information of a reseller are given below.

```
<?xml version="1.0" encoding="utf-8" ?>  
<reseller>  
  <property name="Name">res1.com</property>  
  <property name="ShortName">res1sn</property>  
</reseller>
```

Displaying the Information of a Site

Syntax:

- When the arguments are passed in the form of an XML file:

```
GetInfoObj.exe -t org -f <location_of_XML_file> -u <parent_username> -p  
<parent_password>
```
- When the arguments are passed in the form of a string containing XML data:

```
GetInfoObj.exe -t org -s <XML_data_as_a_string> -u <parent_username>  
-p <parent_password>
```

Arguments:

The parameters to be passed in the XML file for displaying the information of a site are given below.

```
<?xml version="1.0" encoding="utf-8" ?>  
<org>  
  <property name="Name">site1.com</property>  
  <property name="ShortName">site1sn</property>  
</org>
```

Displaying the List of Database Tools

Syntax:

- When the arguments are passed in the form of an XML file:


```
GetInfoObj.exe -t dbtool -f <location_of_XML_file> -u
<parent_username> -p <parent_password>
```
- When the arguments are passed in the form of a string containing XML data:


```
GetInfoObj.exe -t dbtool -s <XML_data_as_a_string> -u
<parent_username> -p <parent_password>
```

Arguments:

The parameters to be passed in the XML file for displaying the information of a site are given below.

```
<?xml version="1.0" encoding="utf-8" ?>
<databasetool>
  <property name="tooltype"></property>
  <!-- tooltype must have one of the following three values,"Microsoft SQL Server 2005"
  or "MySQL" or ""(return all tools)-->
</databasetool>
```

Updating the Information of an Object

Call Name: UpdateObj.exe

Description: Updates the information of an object such as a reseller, a site, a user, the control panel skin, percent quota usage threshold, the Parallels Pro Control Panel license or the encoding type for sending emails.

In this section:

Updating the Information of a Reseller	33
Updating the Information of a Site	35
Description of Parameters Used for Updating a Site.....	39
Updating the Information of a User	46
Updating a Skin.....	48
Updating the Percent Quota Usage Threshold	49
Updating the Parallels Pro Control Panel License	50
Updating the Encoding Type for Sending Emails.....	50

Updating the Information of a Reseller

Syntax:

- When the arguments are passed in the form of an XML file:


```
UpdateObj.exe -t reseller -f <location_of_XML_file> -u
  <parent_username> -p <parent_password>
```
- When the arguments are passed in the form of a string containing XML data:


```
UpdateObj.exe -t reseller -s <XML_data_as_a_string> -u
  <parent_username> -p <parent_password>
```

Arguments:

The parameters to be passed in the XML file for updating the information of a reseller are given below.

```
<?xml version="1.0" encoding="utf-8" ?>
<reseller>
<generalinfo>
<property name="DisplayName">res1 name</property>
<property name="ContactName">res1</property>
<property name="ShortName">res1sn</property>
<property name="ContactPhone">12345678</property>
<property name="ContactEmail">abc@example.org</property>
</generalinfo>
<service add="0">
```

<!-- If you want to increase the quota, set the value of the add flag to "1". If you want to set the value of a quota as unlimited, then the value of that quota should be set to "-1". If value is specified as other than "-1", the quota is increased by the value specified -->

<!-- If you want to decrease the quota, set the value of the add flag to "0". If you want to remove the quota, then the value of that quota should be set to "-1". If the value is specified as other than "-1", the quota is decreased by the value specified -->

<!-- If you want to set the quota, set the value of the add flag to "2". If you want to set the value of a quota as unlimited, then the value of that quota should be set to "-1". If you want to remove the quota, then the value of that quota should be set to "0". If the value is specified as other than "-1" and "0", the quota is set to the value specified -->

```
<property quota="Number of Installations of mysql">1</property>
<property quota="# of MySQL Databases">5</property>
<property quota="Number of Installations of w3svc">2</property>
<property quota="Number of Installations of
  webalizer">3</property>
```

```
<property quota="Bandwidth">0</property>
<property quota="Disk Space">100</property>
<property quota="Number of Installations of Power
Tools">4</property>
<property quota="Number of Installations of
  frontpage">0</property>
<property quota="# of Access DSNs">5</property>
<property quota="# of MyODBC DSNs">5</property>
<property quota="Number of Installations of
  msftpsvc">0</property>
<property quota="Number of Installations of php">4</property>
<property quota="# of SubDomains">3</property>
<property quota="# of DNS Zones">2</property>
<property quota="Number of Installations of perl">1</property>
<property quota="# of SQL DSNs">0</property>
<property quota="Number of Users">0</property>
<property quota="Number of Installations of odbc">0</property>
<property quota="Number of Installations of
Coldfusion">0</property>
<property quota="Number of Installations of
filemanager">0</property>
<property quota="Number of Installations of urchin">5</property>
<property quota="Number of Installations of mail">5</property>
<property quota="Instances of DNS">5</property>
<property quota="# of Microsoft SQL Server 2005
Databases">0</property>
<property quota="Number of Installations of Microsoft SQL Server
2005">0</property>
<property quota="Total Database size of Microsoft SQL Server
  2005
Databases">0</property>
</service>
</reseller>
```

Updating the Information of a Site

Syntax:

- When the arguments are passed in the form of an XML file:

```
UpdateObj.exe -t org -f <location_of_XML_file> -u <parent_username> -p
<parent_password>
```

- When the arguments are passed in the form of a string containing XML data:

```
UpdateObj.exe -t org -s <XML_data_as_a_string> -u <parent_username> -p
<parent_password>
```

Arguments:

The parameters to be passed in the XML file for updating the information of a site are given below. For a detailed description of some of the parameters given below, see the parameters description (on page 16).

```
<?xml version="1.0" encoding="utf-8" ?>
<org>
<generalinfo>
<property name="DisplayName">aa.aa</property>
<property name="ContactName"></property>
<property name="ShortName">aa.aa</property>
<property name="ContactPhone"></property>
<property name="ContactEmail">rdas@ensim.com</property>
</generalinfo>
<admin>
<property name="DisplayName">Administrator</property>
<property name="UserName">admin@aa.aa</property>
<property name="Password">ensim123</property>
<property name="Email">rdas@ensim.com</property>
</admin>
<service name="WebHosting" version="2.0.0">
<generalinfo>
<property name="IsIpbased" type="System.boolean">true</property>
<property name="ip" type="string">10.67.38.12</property>
<property name="IPSelection"
type="System.boolean">>false</property>
```

<!-- For a name-based site, the above parameter should contain the IP address of that site. -->

```
<property name="BandwidthQuota"
type="System.Int32">122</property>
```

```
<property name="BillingCycleStartDay"
type="System.Int32">15</property>
```

```
<property name="BandwidthActionSendMail"
type="System.boolean">>false</property>
```

```
<property name="BandwidthCapped"
type="System.boolean">>true</property>
```

```
<property name="DiskQuota" type="System.Int32">100</property>
```

```
<property name="MaxUsers" type="System.Int64">50</property>
```

```
</generalinfo>
```

```
<ServiceComponent name="msdns" version="2.0.0" enabled="1">
```

<!-- If the enabled flag is equal to "1", then the service component is added or updated. If the flag is equal to "0", then the service component is deleted. -->

```
<property name="NumDNSZones" type="System.double">1050</property>
```

```
<property name="AllowSubdomainsOnly"
type="System.boolean">>true</property>
```

```
<property name="AllowReverseZone"
type="System.boolean">>true</property>
```

```
</ServiceComponent>
```

```
<ServiceComponent name="w3svc" version="2.0.0" enabled="1">
```

```
<property name="EnableDotNet"
type="System.boolean">>false</property>
```

```
<property name="DefaultSSL" type="System.boolean">>false</property>
```

```
<property name="SharedSSL" type="System.boolean">>false</property>
```

```
<property name="SharedSSLHost" type="String"></property>
```

<!-- If the value of the SharedSSL property is true, then the value of the

SharedSSLHost property should include a valid host name, for example,

host.example.org. -->

```
<property name="ThirdPartySSLCertificateInstalled"
type="System.boolean">>false</property>
```

```
<property name="SSI" type="System.boolean">>true</property>
```

```
<property name="HostHeaders" type="System.boolean">>true</property>
```

```
<property name="UseAsPDH" type="System.boolean">>true</property>
```

```
<property name="MaxSubDomains" type="System.Int32">1</property>
```

```
<property name="LogType" type="String">W3C Extended Log File  
Format</property>  
  
<property name="ChangeLogFormat"  
type="System.boolean">true</property>  
  
<property name="Timeout" type="System.Int32">700</property>  
  
<property name="MaxConnections"  
type="System.Int32">1000</property>  
  
<property name="Hits" type="System.Int32">1</property>  
  
<property name="ReverseDNS" type="System.boolean">false</property>  
  
<property name="EnableBWQuota"  
type="System.boolean">false</property>  
  
<property name="BandwidthQuota"  
type="System.Int32">542</property>  
  
<property name="IISPermRead" type="System.boolean">true</property>  
  
<property name="IISPermWrite"  
type="System.boolean">false</property>  
  
<property name="IISPermDirectoryBrowsing"  
type="System.boolean">false</property>  
  
<property name="IISPermExec" type="System.Int32">1</property>  
  
<property name="CPUrl" type="String">10.67.37.59</property>  
  
</ServiceComponent>  
  
<ServiceComponent name="odbc" version="2.0.0" enabled="1">  
  
<property name="TotalSQLDSNCount"  
type="System.Int32">5</property>  
  
<property name="TotalAccessDSNCount"  
type="System.Int32">5</property>  
  
<property name="TotalMyODBCDSNCount"  
type="System.Int32">5</property>  
  
</ServiceComponent>  
  
<ServiceComponent name="mail" version="1.5.0" enabled="1">  
<property name="EnableMailingLists"  
type="System.boolean">false</property>  
<property name="EnableDomainAliases"
```

```
type="System.boolean">>false</property>
<property name="EnableDistributionLists"
type="System.boolean">>true</property>
<property name="EnableSpamFilters" type="System.boolean">>true</
property>
<property name="EnableUserAliases" type="System.boolean">>true</
property>
<property name="EnableWebAccess" type="System.boolean">>true</
property>
<property name="EnableForwards" type="System.boolean">>true</
property>
<property name="EnableAutoresponders"
type="System.boolean">>true</property>
</ServiceComponent>
<ServiceComponent name="mssql" version="1.5.0" enabled="1">
<property name="TotalDatabaseSize"
type="System.Int32">10</property>
<property name="TotalDatabaseCount"
type="System.Int32">2</property>
<property name="EnableDBMgmt"
type="System.boolean">true</property>
<property name="DatabaseTools" type="String">1,4,6,8</property>
</ServiceComponent>
<ServiceComponent name="mysql" version="1.5.0" enabled="1">
<property name="TotalDatabaseCount"
type="System.Int32">100</property>
<property name="DatabaseTools" type="String">2,3,5,7</property>
</ServiceComponent>
</service>
</org>
```

Description of Parameters Used for Updating a Site

This section describes some of the parameters that are included in the XML files and passed to `UpdateObj.exe` for updating a site. The following table describes the parameters included in the **Service** and **ServiceComponent** sections used in the XML files.

Description of parameters used for updating a site			
Parameters	Type	Description of the parameter	Default value
SERVICE NAME: WEBHOSTING			
ip	String	IP address of the site	Must be manually specified
IsIpbased	Boolean	Is the site an IP-based site?	False
IPSelection	Boolean	Was the IPSelection parameter equal to "auto" or did it include the IP address when the site was created? If its value was "auto", then the value of this parameter should be "False". If it included the IP address, then the value of this parameter should be "True". Note: This parameter should be used only for IP-based sites.	False
BillingCycleStartDay	Integer	Start of the billing cycle (day of the month). Its value ranges from 1 to 31.	Must be manually specified
BandwidthActionSendMail	Boolean	Send a mail on exceeding the bandwidth usage	True
BandwidthCapped	Boolean	Redirect the user to the "bandwidth exceeded" page on crossing the limit	False
BandwidthQuota	Integer	Bandwidth quota limit Note: If BandwidthQuota = -1, then its value is set as unlimited.	1024
DiskQuota	Integer	Maximum disk space allowed Note: If DiskQuota = -1, then its value is set as unlimited.	25
MaxUsers	Long	Maximum number of users allowed Note: If Number of Users = -1, then its value is set as unlimited.	5
SERVICECOMPONENT NAME: MSDNS			
NumDNSZones	Integer	Number of DNS zones	5

Description of parameters used for updating a site			
Parameters	Type	Description of the parameter	Default value
AllowSubdomainsOnly	Boolean	Prevent the site from adding arbitrary zones (sub-zones allowed)	True
AllowReverseZone	Boolean	Allow the site to add reverse records	False
SERVICECOMPONENT NAME: W3SVC			
EnableDotNet	Boolean	Enable support for .NET applications on the Web site.	False
ASPNetVersion	String	<p>The version of the Microsoft .NET framework to be used by the .NET applications on the Web site.</p> <hr/> <p>Note: If this parameter is switched to .NET 2.0, please ensure that existing .NET 1.1 applications are compatible with .NET 2.0. However, Power Tools such as DotNetNuke and Community Server will continue to work on .NET 1.1.</p> <hr/> <p>To view the list of the .NET framework versions available on the Parallels Pro Control Panel server, open the Registry Editor, and expand My Computer>HKEY_LOCAL_MACHINE>SOFTWARE>Microsoft>ASP.NET. You must specify the <i>complete</i> version of the .NET framework.</p> <hr/> <p>Note: This parameter is applicable only if you have <i>enabled</i> the EnableDotNet parameter mentioned above.</p>	<p>Must be manually specified</p> <p><i>Example.</i> 1.1.4322.0</p>
SSI	Boolean	Enable Server Side Includes for the site	True
ThirdPartySSLCertificateInstalled	Boolean	Is a third-party SSL certificate installed?	False
DefaultSSL	Boolean	<p>Enable Default SSL certificate</p> <hr/> <p>Note: This parameter should be used only for IP-based sites.</p>	False
SSL	Boolean	Enable SSL	False
SiteLogs	Boolean	Enable site logging	True

Description of parameters used for updating a site			
Parameters	Type	Description of the parameter	Default value
SharedSSLHost	String	FQDN of the SSL host	Must be manually specified <i>Example.</i> host.example.org
HostHeaders	Boolean	Enable host headers	True
UseAsPDH	Boolean	Use as a Park Domain Host	False
MaxSubDomains	Integer	Maximum number of sub-domains Note: If MaxSubDomains = -1, then its value is set as unlimited.	10
LogType	String	Format of the log file <ul style="list-style-type: none"> ▪ The value of LogType can be either one of the values given below. ▪ W3C Extended Log File Format ▪ Microsoft IIS Log File Format ▪ NCSA Common Log File Format 	W3C Extended Log File Format
ChangeLogFormat	Boolean	Allow log formats to be changed	True
MaxConnections	Integer	Maximum number of connections Note: If MaxConnections = -1, then its value is set as unlimited.	1000
Timeout	Integer	Web server connection timeout	900 seconds
Hits	Integer	Expected number of hits per day <ul style="list-style-type: none"> ▪ If Hits = 0, the number of hits expected per day is less than 10000. ▪ If Hits = 1, the number of hits expected per day is less than 100000. ▪ If Hits = 2, the number of hits expected per day is more than 100000. 	1 (less than 100000)
ReverseDNS	Boolean	Enable Reverse DNS lookup	True
EnableBWQuota	Boolean	Allow bandwidth usage to be controlled	False
BandwidthQuota	Integer	Maximum bandwidth usage allowed	1024
IISPermRead	Boolean	Enable read permission for IIS files	True
IISPermWrite	Boolean	Enable write permission for IIS files	False
IISPermDirectoryBrowsing	Boolean	Enable Directory Browsing	False

Description of parameters used for updating a site			
Parameters	Type	Description of the parameter	Default value
IISPermExec	Integer	Permissions for executing files <ul style="list-style-type: none"> If IISPermExec = 0, scripts and executables are not allowed. If IISPermExec = 1, only scripts are allowed. If IISPermExec = 2, both CGI scripts and executables are allowed. 	1 (Allow only scripts)
IISAppIProtection	Integer	Pool type <ul style="list-style-type: none"> If IISAppIProtection = 0, it is a shared pool. If IISAppIProtection = 1, it is a dedicated pool. 	0 (shared pool)
CPUrl	String	URL of the control panel	Computer name or IP address of the server.
SERVICECOMPONENT NAME: MSFTPSVC			
MaxConnections	Long	Maximum number of connections Note: If MaxConnections = -1, then its value is set as unlimited.	5
AnonymousConnections	Boolean	Enable anonymous connections	False
UserIsolationMode	Integer	Method for isolation users (Custom method/Native IIS 6) <ul style="list-style-type: none"> If UserIsolationMode = 0, Custom method is used. If UserIsolationMode = 1, Native IIS 6 method is used. 	0 (Custom method)
Timeout	Integer	Connection timeout period	900
SiteLogs	Boolean	Enable site logs	True
LogType	String	Select the type of log The value of LogType can be either one of the values given below. <ul style="list-style-type: none"> W3C Extended Log File Format Microsoft IIS Log File Format 	W3C Extended Log File Format
IISPermRead	Boolean	Enable download permission for IIS files	True
IISPermWrite	Boolean	Enable upload permission for IIS files	False
MessageExit	String	Exit message	Exit message

Description of parameters used for updating a site			
Parameters	Type	Description of the parameter	Default value
MessageWelcome	String	Welcome message	Welcome message
MessageMaxClients	String	Message when the connection reaches the maximum limit	Maximum connection message
SERVICECOMPONENT NAME: FRONTPAGE			
RequireSSL	Boolean	Enable HTTPS Secure Communications Note: This parameter should be used only for IP-based sites.	False
EnableAuthoring	Boolean	Enable authoring	True
MailSender	String	Address of the sender	Must be manually specified
MailReplyTo	String	Address of the receiver	Must be manually specified
SMTPHost	String	SMTP mail server	Must be manually specified
SERVICECOMPONENT NAME: PHP			
PhpType	Integer	Configure PHP as CGI/ISAPI <ul style="list-style-type: none"> ▪ If PhpType = 0, it is ISAPI. ▪ If PhpType = 1, it is CGI. 	1 (CGI)

Description of parameters used for updating a site			
Parameters	Type	Description of the parameter	Default value
SERVICECOMPONENT NAME: MYSQL			
TotalDatabaseCount	Integer	Maximum number of MySQL databases allowed Note: If TotalDatabaseCount = -1, then its value is set as unlimited.	1
SERVICECOMPONENT NAME: MSSQL			
TotalDatabaseCount	Integer	Maximum number of Microsoft SQL Server 2005 databases allowed Note: If TotalDatabaseCount = -1, then its value is set as unlimited.	0
TotalDatabaseSize	Integer	The total disk space allowed for all Microsoft SQL Server 2005 databases	0
DatabaseTools	String	The string contains the IDs of database tools separated by comma. To get the ID of a specific tool, execute getinfoobj.exe CLI for database tools.	<i>Example:</i> 1,2,3,4,5
EnableDBMgmt	Boolean	By enabling this option, the site administrator can manage databases (that is, add/remove databases/tables). This option will be seen only if the server administrator has purchased the license for MS SQL 2005 add-on from Parallels Pro Control Panel.	FALSE
SERVICECOMPONENT NAME: ODBC			
TotalSQLDSNCount	Integer	Maximum number of SQL data sources allowed Note: If TotalSQLDSNCount = -1, then its value is set as unlimited.	5
TotalAccessDSNCount	Integer	Maximum number of Microsoft Access data sources allowed Note: If TotalAccessDSNCount = -1, then its value is set as unlimited.	5

Description of parameters used for updating a site			
Parameters	Type	Description of the parameter	Default value
TotalMyODBCDSNCount	Integer	Maximum number of MyODBC data sources allowed Note: If TotalMyODBCDSNCount = -1, then its value is set as unlimited.	5
SERVICECOMPONENT NAME: MAIL			
EnableMailingLists	Boolean	Enable mailing lists	False
EnableDomainAliases	Boolean	Enable domain aliases	False
EnableDistributionLists	Boolean	Enable distribution lists	True
EnableSpamFilters	Boolean	Enable spam filters	True
EnableUserAliases	Boolean	Enable user aliases	True
EnableWebAccess	Boolean	Enable Web access	True
EnableForwards	Boolean	Enable forwards	True
EnableAutoresponders	Boolean	Enable autoresponders	True
SERVICECOMPONENT NAME: POWERTOOLS			
PowerToolList	Array of integers	List of Power Tools: <ul style="list-style-type: none"> ▪ 1 represents Gallery ▪ 2 represents WordPress Web log ▪ 3 represents PhpBB bulletin board ▪ 4 represents Community server ▪ 5 represents DotNetNuke 	Must be manually specified <i>Example.</i> 1,2,3,4,5 for all Power Tools

Updating the Information of a User

Syntax:

- When the arguments are passed in the form of an XML file:


```
UpdateObj.exe -t user -f <location_of_XML_file> -u <parent_username> -p
<parent_password>
```
- When the arguments are passed in the form of a string containing XML data:


```
UpdateObj.exe -t user -s <XML_data_as_a_string> -u <parent_username> -
p <parent_password>
```

Arguments:

The parameters to be passed in the XML file for updating the information of a user are given below. For a detailed description of some of the parameters given below, see the parameters description (on page 16).

Note: The parameters that do not have a value specified below are *optional*, and therefore these tags can have *empty* values.

```
<?xml version="1.0" encoding="utf-8" ?>
<user>
  <generalinfo>
    <property name="username">user1@site1sn</property>
    <property name="firstname"></property>
    <property name="middlename"></property>
    <property name="lastname"></property>
    <property name="admin"></property>
    <property name="email"></property>
    <property name="phone"></property>
    <property name="description"></property>
    <property name="enabled">>true</property>
    <property name="street"></property>
    <property name="city"></property>
    <property name="state"></property>
    <property name="country"></property>
    <!-- country should include the two-character alphabetic country code. For
    example, if you want to set country to United States, then specify US as its
    value. -->
    <property name="company"></property>
    <property name="department"></property>
```

```
<property name="office"></property>
<property name="shortname">site1sn</property>
<!-- shortname refers to the short name of the site to which this user needs to be
added. -->
</generalinfo>
<service name="WebHosting" version="2.0.0">
  <ServiceComponent name="w3svc" version="2.0.0" enabled="1">
    </ServiceComponent>
    <ServiceComponent name="msftpsvc" version="2.0.0"
      enabled="1">
      <property name="IISPermRead"
        type="System.boolean">true</property>
      <property name="IISPermWrite"
        type="System.boolean">false</property>
      <property name="UserLog"
        type="System.boolean">true</property>
      <property name="ContentUploader"
        type="System.boolean">false</property>
    </ServiceComponent>
    <ServiceComponent name="frontpage" version="2.0.0"
      enabled="1">
      <property name="ContentUploader"
        type="System.boolean">false</property>
    </ServiceComponent>
    <ServiceComponent name="mail" version="1.5.0" enabled="1">
      <property name="UserEnableWebAccess"
        type="System.boolean">false</property>
      <property name="UserEnableForwards"
        type="System.boolean">false</property>
      <property name="UserEnableAutoresponders"
        type="System.boolean">false</property>
    </ServiceComponent>
  </service>
</user>
```

Updating a Skin

Syntax:

- When the arguments are passed in the form of an XML file:
`UpdateObj.exe -t skin -f <location_of_XML_file> -u <parent_username> -p <parent_password>`
- When the arguments are passed in the form of a string containing XML data:
`UpdateObj.exe -t skin -s <XML_data_as_a_string> -u <parent_username> -p <parent_password>`

Arguments:

The parameters to be passed in the XML file for updating the Parallels Pro Control Panel skin are given below.

```
<?xml version="1.0" encoding="utf-8" ?>
<skin>
<property name="oldskinname"></property>
<property name="newskinname"></property>
<property name="cssfilepath"></property>
<property name="zipfilepath"></property>
</skin>
```


Updating the Percent Quota Usage Threshold

Syntax:

- When the arguments are passed in form of an XML file:

```
SetConfig.exe -t setconfig -f <location_of_XML_file> -u <ISP_username> -p <ISP_password>
```

- When the arguments are passed in the form of a string containing XML data:

```
SetConfig.exe -t setconfig -s <XML_data_as_a_string> -u <ISP_username> -p <ISP_password>
```

Note: This CLI can be invoked using service provider credentials only.

Arguments:

The parameters to be passed in the XML file for updating quota usage threshold are given below.

```
<?xml version="1.0" encoding="utf-8" ?>
<Config>
<property name="QuotaUsageThreshold">85</property>
</Config>
```

Updating the Parallels Pro Control Panel License

CALL NAME: UpdateLicense.exe

DESCRIPTION: Updates the license for using Parallels Pro Control Panel.

Syntax:

- When the arguments are passed in the form of an XML file:
`UpdateLicense.exe -t updatelicense -f <location_of_XML_file> -u <parent_username> -p <parent_password>`
- When the arguments are passed in the form of a string containing XML data:
`UpdateLicense.exe -t updatelicense -s <XML_data_as_a_string> -u <parent_username> -p <parent_password>`

Note: While running the UpdateLicense.exe command, *<parent_username>* refers to the username and *<parent_password>* refers to the password for logging in to the Parallels Pro Control Panel as the **server administrator**.

Arguments:

The parameters to be passed in the XML file for updating the Parallels Pro Control Panel license are given below.

```
<?xml version="1.0" encoding="utf-8" ?>
<license>
  <property name="licensekey">AAAAA11111BBBBB22222CCCCC</property>
</license>
```

Updating the Encoding Type for Sending Emails

CALL NAME: SetConfig.exe

DESCRIPTION: Updates the encoding type for sending emails.

Syntax:

- When the arguments are passed in the form of an XML file:
`SetConfig.exe -t setconfig -f <location_of_XML_file> -u <ISP_username> -p <ISP_password>`
- When the arguments are passed in the form of a string containing XML data:
`SetConfig.exe -t setconfig -s <XML_data_as_a_string> -u <ISP_username> -p <ISP_password>`

Note: This CLI can be invoked using service provider credentials only.

Arguments:

The parameters to be passed in the XML file for updating the Parallels Pro Control Panel encoding type are given below.

```
<?xml version="1.0" encoding="utf-8" ?>
<Config>
<property name="EncodingType">utf-8</property>
</Config>
```

Exporting and Importing Site Information

The Export CLI call allows you to capture and store the current state of a site. The Import CLI call allows you to restore a site to the state when it was exported. This feature allows you to restore the original state of a site in case the entire data or a specific service of that site is corrupted.

➤ **You can export and import a site with the following options:**

- Configuration settings of the site and all its users
- Configuration settings of the site and its default site administrator
- Configuration settings and service-specific data of the site and all its users
- Configuration settings and service-specific data of the site and its default site administrator

Note: The **configuration settings** of a site refer to the options specified while adding or editing the site. For example, the *Total number of zones* option in the Microsoft DNS service component.

The **service-specific data** of a site refers to the options and the files or directories created and managed by the site administrator. For example, the name of the DNS zone created by the site administrator.

You can export and import site information using the `ExportObj.exe` and `ImportObj.exe` calls. Both calls use the same XML format for passing the parameters.

In this section:

Exporting Site Information	52
Importing Site Information	52

Exporting Site Information

CALL NAME: ExportObj.exe

DESCRIPTION: Exports the site information from the Parallels Pro Control Panel to a directory on the same server.

Syntax:

- When the arguments are passed in the form of an XML file:

```
ExportObj.exe -t org -f <location_of_XML_file> -u <parent_username> -p
<parent_password>
```

- When the arguments are passed in the form of a string containing XML data:

```
ExportObj.exe -t org -s <XML_data_as_a_string> -u <parent_username> -p
<parent_password>
```

Arguments:

The parameters to be passed in the XML file for exporting the site information are given below.

```
<?xml version="1.0" encoding="utf-8" ?>
<orglist>
  <org name="site1.com">
    <property name="ShortName" type="string">site1sn</property>
    <property name="ConfigOnly"
type="System.Boolean">false</property>
    <!-- To export or import only the configuration settings of a site, set the
ConfigOnly flag to "true". To export or import both the configuration settings and
the service-specific data of a site, set the ConfigOnly flag to "false".-->
    <property name="WithAllUsers"
type="System.Boolean">false</property> <!-- To export or import the
information of all users, set the WithAllUsers flag to "true". To export or import
the information of only the default site administrator, set the WithAllUsers flag to
"false".-->
  </org>
</orglist>
```

Importing Site Information

CALL NAME: ImportObj.exe

DESCRIPTION: Imports the site information from its export directory to the Parallels Pro Control Panel.

Syntax:

- When the arguments are passed in the form of an XML file:

```
ImportObj.exe -t org -f <location_of_XML_file> -u <parent_username> -p
<parent_password>
```

- When the arguments are passed in the form of a string containing XML data:

```
ImportObj.exe -t org -s <XML_data_as_a_string> -u <parent_username> -p
<parent_password>
```

Arguments:

The parameters to be passed in the XML file for exporting or importing the site information are given below.

```
<?xml version="1.0" encoding="utf-8" ?>
<orglist>
  <org name="site1.com">
    <property name="ShortName" type="string">site1sn</property>
    <property name="ExportImportPath"
type="string">c:\exportimport</property>
    <property name="ConfigOnly"
type="System.Boolean">>false</property>
    <!-- To export or import only the configuration settings of a site, set the
ConfigOnly flag to "true". To export or import both the configuration settings and
the service-specific data of a site, set the ConfigOnly flag to "false".-->
    <property name="WithAllUsers"
type="System.Boolean">>false</property> <!-- To export or import the
information of all users, set the WithAllUsers flag to "true". To export or import
the information of only the default site administrator, set the WithAllUsers flag to
"false".-->
  </org>
</orglist>
```

CHAPTER 3

Changing the Network Settings of Your Server

This section includes the instructions for changing the network settings of the Parallels Pro Control Panel server.

In this chapter:

Changing the Network Settings of Parallels Pro Control Panel Server.....	55
Adding a New IP Address to Your Server's Network Card.....	60

Changing the Network Settings of Parallels Pro Control Panel Server

This section describes the process of changing the network settings of your Parallels Pro Control Panel server using either `Networkconfiguration.exe` or `NetworkconfigurationCLI.exe`.

`Networkconfiguration.exe` and `NetworkconfigurationCLI.exe` are tools included with Parallels Pro Control Panel that allow you to change either the IP address or the Fully Qualified Domain Name (FQDN) of the server on which Parallels Pro Control Panel is installed, or both. This utility will change the IP address of all name-based sites that use the IP address of the Parallels Pro Control Panel server.

Note: Please notify the site administrators about the change in the IP address for these name-based sites.

You can change the network settings of your Parallels Pro Control Panel server by either using the graphical interface provided by `Networkconfiguration.exe`, or using the command line interface (CLI) provided by `NetworkconfigurationCLI.exe`.

In this section:

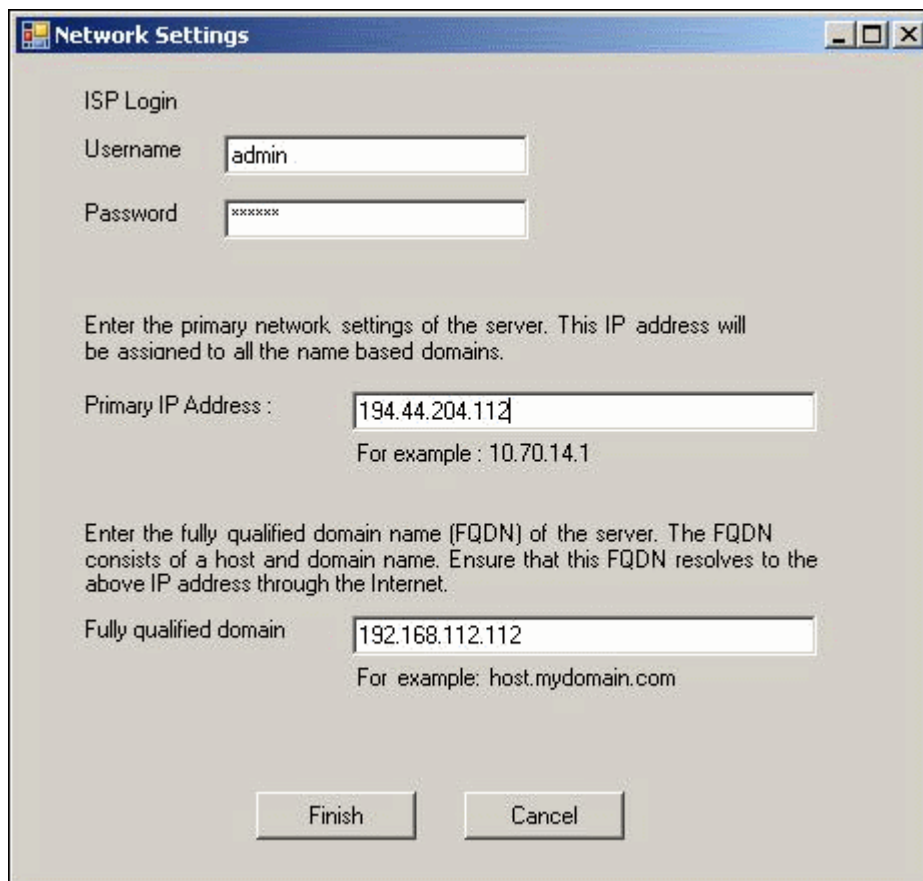
Using the Graphical Interface (<code>Networkconfiguration.exe</code>)	56
Using the Command Line Interface (<code>NetworkconfigurationCLI.exe</code>)	59

Using the Graphical Interface (Networkconfiguration.exe)

This section provides instructions for using Networkconfiguration.exe to change the network settings of your Parallels Pro Control Panel server.

- **To change the network settings of Parallels Pro Control Panel server using the graphical interface:**
- 1 Connect to the Parallels Pro Control Panel server using the console or terminal services and log on as the administrator.
 - 2 Browse to `<Parallels_Pro_Control_Panel_install_path>\cp\admin\bin` directory, where `<Parallels_Pro_Control_Panel_install_path>` is the location of the Parallels Pro Control Panel installation directory. If Parallels Pro Control Panel is installed in the default location, then the path is `C:\Program Files\Ensim\WEBppliance\cp\admin\bin`.
 - 3 Run `Networkconfiguration.exe` located in this directory.

The **Network Settings** window opens.



ISP Login

Username

Password

Enter the primary network settings of the server. This IP address will be assigned to all the name based domains.

Primary IP Address :
For example : 10.70.14.1

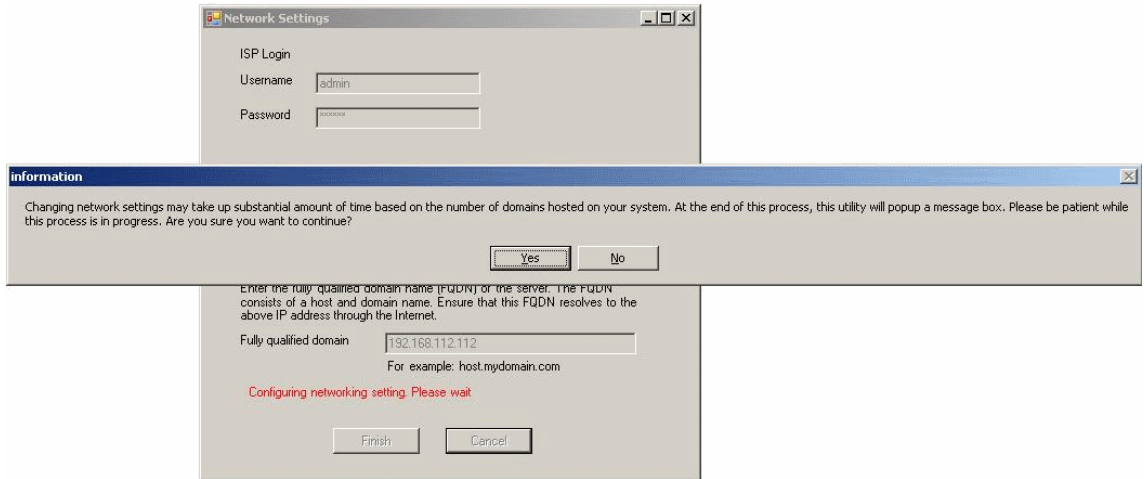
Enter the fully qualified domain name (FQDN) of the server. The FQDN consists of a host and domain name. Ensure that this FQDN resolves to the above IP address through the Internet.

Fully qualified domain
For example: host.mydomain.com

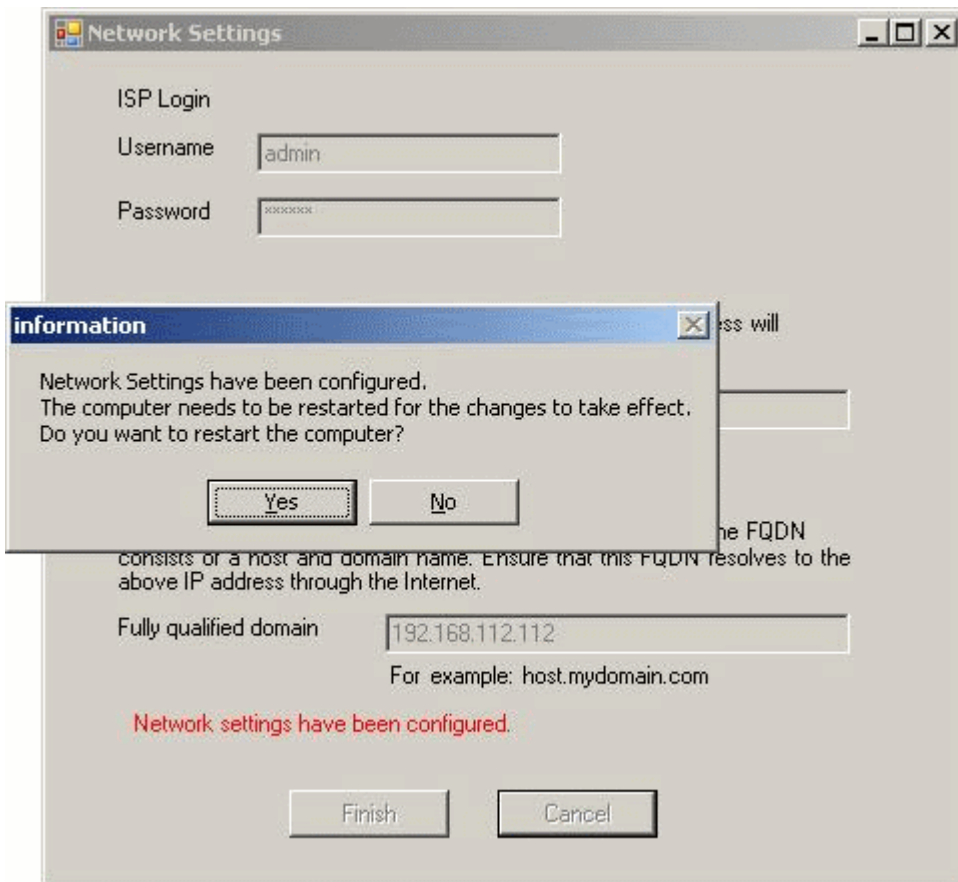
- 4 In the **Network Settings** window, enter the Server Administrator’s password, the new IP address, and the new FQDN of the server.

Important: Please ensure that the new IP address is present in the list of IP addresses in the network settings of your server’s network card. To add a new IP address to the list, see the instructions for adding IP addresses (on page 60).

- 5 Click **Finish**.



- 6 Click **Yes**.



- 7 After the network settings have been changed, click **Yes** to restart the server and **No** to cancel the restart.

The network settings of the server are changed after it is restarted.

- 8 To confirm the new settings of the Parallels Pro Control Panel server:

1. Open your Web browser.
2. In the **Address** field of your Web browser, type the URL:
https://<server_name>/cp where **<server_name>** is the FQDN or IP address of the Parallels Pro Control Panel server. The Log in page opens.
3. In the **username** text box, type `admin`.
4. In the **password** text box, enter your password.
5. Click **Log In**.

The server administrator home page opens.

Using the Command Line Interface (NetworkconfigurationCLI.exe)

This section provides instructions for using NetworkconfigurationCLI.exe to change the network settings of your Parallels Pro Control Panel server.

➤ **To change the network settings of Parallels Pro Control Panel server using the CLI:**

- 1 Connect to the Parallels Pro Control Panel server using the console or terminal services and log on as the administrator.
- 2 Open a command window, and change to `<Parallels_Pro_Control_Panel_install_path>\cp\admin\bin` directory, where `<Parallels_Pro_Control_Panel_install_path>` is the location of the Parallels Pro Control Panel installation directory. If Parallels Pro Control Panel is installed in the default location, then the path is `C:\Program Files\Ensim\WEBpliance\cp\admin\bin`.
- 3 Type the following command on the command line.

```
NetworkconfigurationCLI.exe <server_IP_address> <server_FQDN> <username>
<password> <restart_now>
```

where:

- `<server_IP_address>` is the new IP address of the Parallels Pro Control Panel server
- `<server_FQDN>` is the new Fully Qualified Domain Name (FQDN) of the server

Note: If you want to change only one parameter, either the server's IP address or its FQDN, ensure that you enter the current value of the other parameter.

- `<username>` is the server administrator's login name for logging onto the Parallels Pro Control Panel.
- `<password>` is the server administrator's password for logging onto the Parallels Pro Control Panel
- `<restart_now>` refers to whether you want to restart the server after executing the command or not. If you want to restart the server, type `yes`; if not, type `no`.

Note: The network settings of the server are changed only *after* it is restarted.

Example:

If you want to change your Parallels Pro Control Panel server's IP address to 192.0.34.166, and its FQDN to example.net, then run the following command:

```
NetworkconfigurationCLI.exe 192.0.34.166 example.net admin
parallelspro yes
```

If you want to change only the server's IP address to 192.0.34.100, then run the following command with the server's current FQDN.

```
NetworkconfigurationCLI.exe 192.0.34.100 example.net admin
parallelspro yes
```

Adding a New IP Address to Your Server's Network Card

This section describes the process of adding a new IP address to the list of IP addresses in the network settings of your server's network card.

➤ **To add a new IP address:**

- 1 Connect to the Parallels Pro Control Panel server using the console or terminal services and log on as the administrator.
- 2 Click **Start > Settings > Control Panel**.
- 3 Double-click **Network Connections**. The *Network Connections* window opens.
- 4 In the *Network Connections* window, right-click **Local Area Connections** (or the network connection you are using with Parallels Pro Control Panel) and choose **Properties**. The *Local Area Connections* window opens.
- 5 In the *Local Area Connections* window, select **Internet Protocol (TCP/IP)** and click **Properties**. The *Internet Protocol (TCP/IP)* window opens.
- 6 In the *Internet Protocol (TCP/IP)* window, click **Advanced**. The *Advanced TCP/IP Settings* window opens displaying the *IP Settings* tab.
- 7 In the *IP addresses* section, click **Add**. The *TCP/IP Address* window opens.
- 8 In the *TCP/IP Address* window, enter the new IP address and the Subnet mask of the network, and click **Add**.
- 9 To confirm the addition of a new IP address, in the *Advanced TCP/IP Settings* window, verify that the new IP address is displayed.
- 10 The new IP address is successfully added to your server's network card.

Integrating Custom Scripts With Parallels Pro Control Panel

This section provides guidelines on how to integrate custom scripts that are run, when a site is added, edited, or deleted using Parallels Pro Control Panel.

In this chapter:

About the Custom Scripts.....	62
Before You Integrate the Custom Scripts	62
Enabling the Custom Scripts Integration Feature.....	63

About the Custom Scripts

You can integrate custom scripts on the Parallels Pro Control Panel server that are run, when a site is added, edited, or deleted using Parallels Pro Control Panel. These custom scripts allow you to perform any additional tasks after the site operation has completed.

Each site operation is associated with a particular script name as mentioned below:

- Add site operation: **customaddsite.vbs**
- Edit site operation: **customedit-site.vbs**
- Delete site operation: **customdeletesite.vbs**

When each custom script is called by Parallels Pro Control Panel after the corresponding site operation, the following list of parameters is passed to it:

- **<site-domainname>**: Domain name of the site.
- **<site-adminname>**: Site administrator's username for logging in to the Parallels Pro Control Panel.
- **<site-adminpassword>**: Site administrator's password for logging in to the Parallels Pro Control Panel.

Before You Integrate the Custom Scripts

Before you integrate the custom scripts with Parallels Pro Control Panel, keep the following points in mind:

- The custom script is run only after all the actions of the corresponding site operation are *successful*. If any action of the site operation fails, the custom script is not run. When the script is run, the *Action Log* page in the Parallels Pro Control Panel for that site operation displays that the script has been initialized.
- The *return code* of the custom script does not affect the status of the corresponding site operation. Even if the script fails, the site operation does not fail.
- After the corresponding site operation has completed successfully, it runs the custom script, but *does not wait* for the script to complete.
- Since the custom scripts are run in the context of the *System* user on the Parallels Pro Control Panel server, it cannot display any dialog box to the user on the screen. If the script tries to display a dialog box on the screen that requires a user's input, the server stops responding to any further requests.
- Since *cscript* is used for running the custom scripts, ensure that the location of `cscript.exe` is added to the Windows path variable.

Enabling the Custom Scripts Integration Feature

To enable the custom scripts integration feature, the custom scripts *must* be present in the `customscripts` directory on the Parallels Pro Control Panel server.

➤ **To enable the custom scripts integration feature:**

- 1 Log in to the Parallels Pro Control Panel server as the administrator.
- 2 Go to the `<install_dir>` directory, where `<install_dir>` is the location of the Parallels Pro Control Panel installation directory. If default settings were used during the Parallels Pro Control Panel installation, the directory path is `C:\Program Files\Ensim\WEBpliance`.
- 3 Create a `customscripts` directory in `<install_dir>`.
- 4 Depending upon the site operation for which you want to run the custom script, copy the following scripts in the `customscripts` directory.
 - Add site operation: `customaddsite.vbs`
 - Edit site operation: `customedit-site.vbs`
 - Delete site operation: `customdeletesite.vbs`

The custom scripts integration feature is enabled. You can now test it by performing the corresponding site operations in the Parallels Pro Control Panel for which you have copied the custom scripts.

Glossary

A

action log

A record of the actions performed on the system by administrators. To access the action log, click **reports** on the top navigation bar.

application programming interface

An XML-based or Web services based application programming interface (API). The API can be used to streamline common tasks and to integrate third-party systems.

B

bandwidth

The amount of network capacity assigned to a user on a server.

C

control panels

Graphical user interfaces that provide easy access to tasks. These control panels enable service providers, resellers, site administrators, and users to manage their accounts, resources, and other system settings.

E

Parallels Pro Control Panel database server

A server that manages the database functions of the system. All configuration information for the Parallels Pro Control Panel platform is stored in a Microsoft SQL Server 2005 database on this server.

F

File Transfer Protocol (FTP)

A protocol used to transfer files over the Internet. FTP includes functions to log on to the network, list directories, and copy files. FTP operations can be performed by typing commands in a command line or by using an FTP utility running under a graphical interface. Anonymous FTP allows you to use an FTP site without a password and without creating a user account.

filter

A pattern or mask through which only selected data is passed. Common filters include spam filters, which block email sent from specified domains.

firewall

A method for keeping a network secure.

FTP

File Transfer Protocol. A protocol used to transfer files over the Internet. FTP includes functions to log on to the network, list directories, and copy files. FTP operations can be performed by typing commands in a command line or by using an FTP utility running under a graphical interface. Anonymous FTP allows you to use an FTP site without a password and without creating a user account.

G

graphical user interface (GUI)

An interface between a user and a computer that is graphics-based and incorporates icons, menus, and a mouse.

GUI

Graphical user interface. An interface between a user and a computer that is graphics-based and incorporates icons, menus, and a mouse.

H

Host (A) record

A record that translates a domain or sub-domain to its IP address, also known as forward mapping (host-name-to-IP-address). The opposite is reverse mapping, using a Pointer (PTR) record. There should be one A record for each host address.

host name

The fully qualified host name used to identify the server. For example: *server1.bigtimehosting.com*.

I

IMAP

Internet Mail Access Protocol (IMAP) is a protocol used to access email from a central mail server. It allows users to access email on the mail server as if it were on a local hard drive; however, remains on the mail server. This enables access from multiple machines without requiring the transfer of files.

IMAP mail server

A common mail server used for Internet email, similar to POP3, but in addition to holding incoming email messages until a user logs in to the email account and downloads the messages, it allows users to archive email messages into folders, share mailboxes with other users, access multiple mail servers at once, and more efficiently access mail attachments.

IP

Internet Protocol. The protocol used to format packets and rules of transmission and reception over the Internet.

IP address

The numeric identifier of a computer or device on the Internet. The format of an IP address is a 32-bit numeric address written as four numbers separated by periods. Each number can be zero to 255.

IP-based domain

A domain with a unique IP address. Compare to name-based domain.

L

license

An official agreement between a user and a corporation on the use and support of its products.

log

A detailed history of actions that have been performed on a system.

M

mailbox

A directory on a server that contains a user's email.

mailbox capacity

The maximum number of mailboxes that can be created on a server.

mailing lists

Email distribution lists commonly used to circulate topic discussions. A mailing list includes a set of list members. Whenever a list member posts an email message to the mailing list email address, that email message is distributed to all list members.

N

name-based domain

A domain with a unique host name that shares an IP address with another server. Compare to IP-based domain.

netmask

A bit-mask that identifies the network number and host number components of an IP address.

NFS server

Network File System server. A computer with file sharing capabilities.

NS record

Name Server record. A record that specifies the host name of a DNS server that is authoritative for the domain. A DNS zone requires at least one NS record. If there is only one NS record in a zone, it cannot be removed.

P

POP3 mail server

Post Office Protocol, version 3. A common mail server used for Internet email. It holds the incoming email messages until you log in to the email account and download the messages. All stored email messages and attachments are downloaded at the same time.

primary name server

The main Domain Name System (DNS) server that translates alphabetic domain names into numeric IP addresses.

properties

Settings that determine the characteristics of an account or a server.

provisioning

Enabling a service to a site or a user.

Q

queue

A temporary holding place for data.

R

record

A record contains specific DNS zone information.

reseller

The individuals or companies who purchase resources and services from service providers or resellers and offer those resources or services for sale to others.

resource

A term used to describe a server's disk space or processing capacity which are used by services.

resource type

The type of service or a service component that requires resources. Resource types include bandwidth, number of mailboxes, and disk space.

restore

To completely or partially return your system to a previous file configuration state by uploading backup files from an archive.

reverse record

A record that associates an IP address with a canonical or alias name. PTR records are used to convert IP addresses to host names. This is known as reverse lookup.

S

scope

Logical groupings of IP addresses associated with a specific subnet mask.

secondary name server

The backup Domain Name System (DNS) server that translates alphabetic domain names into numeric IP addresses.

Secure Socket Layer (SSL)

An Internet security protocol that encrypts data when it is transferred over the Internet. Enabling SSL allows you to transfer data securely between your Web server and your visitor's Internet browser.

sendmail server

An SMTP (Simple Mail Transfer Protocol) mail server that routes SMTP email messages through the Internet to be stored on a mail server, such as POP3 or IMAP. SMTP is the most widely used email protocol on the Internet.

server

A computer and other device that allocates and manages the sharing of resources for a network. A server provides information or other services to its clients. While a server usually refers to an entire machine, it can also refer to a particular daemon on that machine.

service

The services you sell to resellers and sites. Each service is installed on a service-specific hosting server.

service component

The software elements that compose a service.

service provider

An entity that sells services, such as Internet access or Windows Web Hosting, to resellers, sites, and individuals.

Simple Mail Transfer Protocol (SMTP)

The most widely used email protocol on the Internet.

site

A group of individuals, usually collected into a company or business unit, that contracts with a service provider or IT group for services.

site administrator

Administrators who belong to sites and use the site administrator control panel to manage site services, resources, and users. Site users can be given site administrator privileges.

site user

Users who belong to a site and use the user administrator control panel to manage their own accounts and services.

SMTP

Simple Mail Transfer Protocol. The most widely used email protocol on the Internet.

specification file

A file that contains details about an object.

SSL

Secure Socket Layer. An Internet security protocol that encrypts data when it is transferred over the Internet. Enabling SSL allows you to transfer data securely between your Web server and your visitor's Internet browser.

subnet

A portion of a network that shares a common address component. On TCP/IP networks, subnets are defined as all devices whose IP addresses have the same prefix. For example, all devices with IP addresses that start with 100.100.100. would be part of the same subnet. Dividing a network into subnets is useful for both security and performance reasons. IP networks are divided using a subnet mask.

subnet mask

A mask, or filter, used to determine to what subnet an IP address belongs. An IP address has two components, the network address and the host address. The mask is a binary pattern that is matched up with the IP address to turn part of the host ID address field into a field for subnets. For example, consider the IP address 150.215.017.009. Assuming this is part of a Class B network, the first two numbers (150.215) represent the Class B network address, and the second two numbers (017.009) identify a particular host on this network. Subnetting enables the network administrator to further divide the host part of the address into two or more subnets. In this case, a part of the host address is reserved to identify the particular subnet.

T

template

A guide you can use to pre-fill information on forms when creating entities such as sites and users.

U

URL

Uniform Resource Locator. The address that defines the route to a file on the Web or any other Internet facility. The URL contains the protocol prefix, port number, domain name, subdirectory names, and file name.

Z

zone

A zone refers to a section of a domain for which the DNS server has the authority to perform lookups. Each zone contains records that specify how to translate the host names associated with the zone.