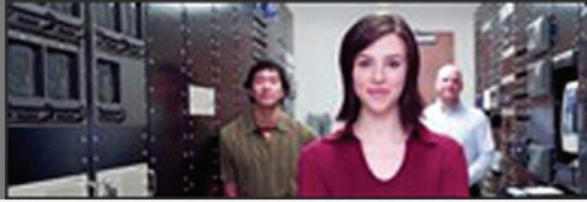


ENSIM PRO - WINDOWS



## Ensim<sup>®</sup> Pro 10.0.0 for Windows<sup>®</sup> 2003 Technical Reference Guide



Published: May 31, 2006

---

© 2006 Ensim Corporation. All rights reserved.

This document contains information proprietary to Ensim Corporation and its receipt or possession does not convey any rights to reproduce, disclose, manufacture, or sell anything it might describe. Reproduction, disclosure, or use without Ensim's specific written authorization is strictly forbidden.

Ensim Corporation makes no representations or warranties with respect to the contents or use of this document. It also reserves the right to revise this publication and make changes to the content at any time, without the obligation to notify any person or entity of such revisions or changes.

Further, Ensim Corporation assumes no responsibility or liability for any errors or inaccuracies, makes no warranty of any kind (express, implied or statutory) with respect to the contents or use of the information, and expressly disclaims any and all warranties of merchantability, fitness for particular purposes, and non-infringement of third party rights.

Ensim and the Ensim logo are registered trademarks of Ensim Corporation.

All other trademarks are the property of their respective owners.

## **CORPORATE HEADQUARTERS**

Ensim Corporation  
1366 Borregas Avenue  
Sunnyvale, CA 94089  
(408) 745-3300

[www.ensim.com](http://www.ensim.com)

*epw1000\_technical\_reference\_1*

---

# Contents

## *About this guide*

Introduction .....	v
Intended audience and required skills.....	v
Related documentation .....	v
Online Help .....	vi
Document conventions.....	vi
Support and feedback .....	vii

## *Chapter 1*

### *Command Line Interface (CLI) calls*

Introduction .....	1-1
Overview of Command Line Interface (CLI) calls.....	1-1
Syntax of CLI calls .....	1-2
How to use the CLI calls.....	1-3
Adding an object .....	1-3
Adding a reseller.....	1-4
Adding a site .....	1-4
Adding a user template.....	1-5
Parameters for creating user templates and updating users .....	1-7
Adding a user.....	1-8
Deleting an object .....	1-9
Deleting a reseller.....	1-9
Deleting a site .....	1-9
Deleting a user template.....	1-10
Deleting a user.....	1-10
Displaying the information of an object .....	1-11
Displaying the information of a reseller.....	1-11
Displaying the information of a site.....	1-11
Updating the information of an object .....	1-12
Updating the information of a reseller.....	1-12
Updating the information of a site .....	1-13
Parameters used for updating a site.....	1-17
Updating the information of a user.....	1-22
Exporting and importing site information.....	1-24

---

Exporting site information .....	1-25
Importing site information .....	1-26
Updating the Ensim Pro license .....	1-27

## *Chapter 2*

### *Changing the network settings of your server*

Introduction .....	2-1
Changing the network settings of Ensim Pro server .....	2-1
Using the graphical interface (Networkconfiguration.exe) .....	2-1
Using the command line interface (NetworkconfigurationCLI.exe).....	2-4
Configuring IMail after changing the FQDN of the server.....	2-5
Adding a new IP address to your server's network card .....	2-5

## *Chapter 3*

### *Integrating custom scripts with Ensim Pro*

Introduction .....	3-1
About the custom scripts .....	3-1
Before you integrate the custom scripts.....	3-1
Enabling the custom scripts integration feature .....	3-2

## *Index*

## *Index-1*

# About this guide

## Introduction

This guide provides information on the Command Line Interface (CLI) commands included in Ensim<sup>®</sup> Pro 10.0.0 for Windows<sup>®</sup> 2003. It also provides instructions for changing the network settings of your server.

### Note

For simplicity, Ensim Pro 10.0.0 for Windows 2003 is referred to as “Ensim Pro” throughout this document.

Sections in this guide include:

- [Chapter 1, “Command Line Interface \(CLI\) calls”](#). How to create, edit, view, and delete resellers, sites, users, and user templates, export and import sites on Ensim Pro, and update the Ensim Pro license using the CLI calls.
- [Chapter 2, “Changing the network settings of your server”](#). How to change the network settings of your Ensim Pro server using Networkconfiguration.exe.
- [Chapter 3, “Integrating custom scripts with Ensim Pro”](#). How to integrate custom scripts that are run when a site is added, edited, or deleted using Ensim Pro.
- [Index](#). Key words with page references to help you find information.

## Intended audience and required skills

This guide is written for advanced users of Ensim Pro, including system administrators and technical support staff of Internet service providers (ISPs) who are using Ensim Pro.

To use this guide, you need to be familiar with the workings of Ensim Pro. In addition, you should have some or all of the following skills:

- Using the Windows 2003 command prompt
- Understanding of XML (eXtensible Markup Language)

## Related documentation


The following documents provide additional information about Ensim Pro:

- [Ensim<sup>®</sup> Pro 10.0.0 for Windows<sup>®</sup> 2003 Release Notes](#). Important information about this release, including known issues.

- *Ensim<sup>®</sup> Pro 10.0.0 for Windows<sup>®</sup> 2003 (Standalone) Installation and Upgrade Guide.* Instructions for installing or upgrading Ensim Pro on a standalone Windows Server 2003 server.
- *Ensim<sup>®</sup> Pro 10.0.0 for Windows<sup>®</sup> 2003 Mail API Guide.* Information about using the email-related API calls for creating your own mail add-on.

You can find these and other related documents in the Ensim Pro section of the Ensim Support site, <http://support.ensim.com>. All customers receive passwords that allow access to this site. If you do not have a password, contact your organization's liaison to Ensim.

## Online Help

The Ensim Pro control panel provides comprehensive online Help designed to answer questions and help you find the information you need, when you need it. To access online Help, log in to the control panel, then click the Help links on the lower left navigation panel. To get help for a specific page, click  on the upper right side of forms.

## Document conventions

Throughout this guide, specific fonts are used to identify computer input, output, and interface elements. [Table 1](#) lists the typographic conventions used in this guide.

**Table 1. Typographic conventions**

Appearance of text	How it is used
<b>Narrow bold text (sans serif font)</b>	Used for button names, column names, field names, file names, keystrokes, menu items, and path names. <i>Example:</i> Click <b>Start</b> , point to <b>Settings</b> , then click <b>Control Panel</b> .
<b>Regular bold text (serif font)</b>	Used for information you type. <i>Example:</i> On the command line, type <b>continue</b>
<b>Bold, italic text (serif font)</b>	Used for variables you replace with appropriate information. <i>Example:</i> Type <i>&lt;servername&gt;</i> where <i>&lt;servername&gt;</i> is the host name of your server.
Courier font	Used for system messages and screen text. <i>Example:</i> The following message is displayed: The server has been added.



### Tip

In addition, key information is sometimes displayed using special headings and formats, such as this one, to make it stand out from regular text.

---

## Support and feedback

For Ensim online support or feedback, use the following links:

- <http://support.ensim.com> to create an Ensim Support account
- <https://onlinesupport.ensim.com> to log in to Ensim Support using an existing account
- [http://onlinesupport.ensim.com/kb\\_search\\_sln.asp](http://onlinesupport.ensim.com/kb_search_sln.asp) to search the knowledge base
- <http://www.ensim.com/about/feedback.asp> to provide feedback to Ensim

 **Note**

All customers receive passwords that allow access to the Ensim Support site. If you do not have a password, contact your organization's liaison to Ensim.

---





# Command Line Interface (CLI) calls

## Introduction

This chapter describes the Command Line Interface (CLI) calls that you can use to create, edit, view, and remove resellers, sites, users, or user templates on the Ensim Pro server. You can also use the CLI calls to export and import site information and to update the Ensim Pro license. Instead of logging in to the Ensim Pro control panel to perform the operations described above, you can execute these calls directly from the command line.

Topics in this chapter include:

- “Overview of Command Line Interface (CLI) calls” on page 1-1
- “How to use the CLI calls” on page 1-3
- “Adding an object” on page 1-3
- “Deleting an object” on page 1-9
- “Displaying the information of an object” on page 1-11
- “Updating the information of an object” on page 1-12
- “Exporting and importing site information” on page 1-24
- “Updating the Ensim Pro license” on page 1-27

## Overview of Command Line Interface (CLI) calls

This section describes the various calls that you can use to create, edit, view, and remove resellers, sites, or users directly from the command line. It also describes the calls to export and import site information. The seven CLI calls located in the `cli` directory as executables are as follows:

- **addobj.exe:** Adds an object such as a reseller, a site or a user to the Ensim Pro database.
- **DeleteObj.exe:** Deletes an object from the Ensim Pro database.
- **GetInfoObj.exe:** Displays the configuration of an object.
- **UpdateObj.exe:** Updates the information for an object.
- **ExportObj.exe:** Exports the site information from Ensim Pro to a directory on the same server.
- **ImportObj.exe:** Imports the site information from its export directory to Ensim Pro.
- **UpdateLicense.exe:** Updates the Ensim Pro license.

## Syntax of CLI calls

The syntax for running the CLI calls is as follows:

- When the arguments are passed in the form of an XML file:

```
<call_name> -t <org / reseller / user / usertemplate / updatelicense> -f
<location_of_XML_file> -u <parent_username> -p <parent_password>
```

where, *<parent\_username>* and *<parent\_password>* refer to the login information of the parent administrator for that specific site, reseller, user, or user template. This login information is used by the parent administrator to log in to the Ensim Pro control panel. For example, if you want to create a site that **belongs** to a reseller, then the login information of **that reseller** should be specified in the command.

While running the CLI call with the **updatelicense** parameter, *<parent\_username>* and *<parent\_password>* refer to the login information of the **server administrator**.

### Example

To view the information of a reseller, run the following command using the “-f” option.

```
GetInfoObj.exe -t reseller -f C:\wwpcli\xml\getresellerinfo.xml -u admin -p ensimpro
```

where **getresellerinfo.xml** is an XML file containing all the parameters required to execute **GetInfoObj.exe** and located in the **C:\wwpcli\xml** directory.

- When the arguments are passed in the form of a string containing XML data:

```
<call_name> -t <org / reseller / user / usertemplate / updatelicense> -s
<XML_data_as_a_string> -u <parent_username> -p <parent_password>
```

### Example

To view the information for a reseller “res1.com”, run the following command using the “-s” option.

```
GetInfoObj.exe -t reseller -s "<?xml version='1.0' encoding='utf-8'
?><reseller><property name='Name'>res1.com</property><property
name='ShortName'>res1sn</property></reseller>" -u admin -p ensimpro
```

where the string **<?xml version='1.0' encoding='utf-8' ?><reseller><property name='Name'>res1.com</property><property name='ShortName'>res1sn</property></reseller>** contains all the parameters required to execute **GetInfoObj.exe** in XML format.

### Note

Note that the XML string is enclosed in double quotes (") and the attribute values in the XML string are enclosed in single quotes (').

## How to use the CLI calls

This section describes how to run the CLI calls from the command line.

### Procedure

To run the CLI calls:

- 1 Use a terminal services client like **Remote Desktop Connection** to start a session on the Microsoft® Windows 2003 server running Ensim Pro.
- 2 In your terminal services session, open a command prompt window, then change to the directory where the CLI program files are located. If you have installed Ensim Pro in the default **Program Files** directory, the location of the CLI files is:

**C:\Program Files\Ensim\WEBpliance\cli**

- 3 Create an XML file using a standard text editor to include all the arguments necessary for running the call.

### Note

We recommend that you create the XML file, save it, then use the “-f” option of the call to specify the location of this file. If you use the “-s” option, you cannot use line breaks in the XML data since the entire XML data must be specified on a single line.

- 4 Run the calls with the parameters described in this guide and the results will be displayed accordingly.

### Important

Each CLI call described in this guide includes an example of the XML data that it needs to execute. **Do not change the syntax of the XML file while creating it.** You can replace the values of the parameters given in these examples.

If the values passed in the XML file are invalid, then the call fails with an error.

## Adding an object

**Call Name:** addobj.exe

**Description:** Adds an object such as a [reseller](#), a [site](#), a [user template](#), or a [user](#) to Ensim Pro.

### Important

Before running this call for a reseller or a site, the Ensim Pro control panel must contain a template for adding a new reseller or site. If a template does not exist, you must create a new template using the Ensim Pro control panel. For instructions on creating a new template, please refer to the online Help available in the Ensim Pro control panel by clicking **General Help** in the *Help* section on the left navigation panel.

## Adding a reseller

### Syntax:

- When the arguments are passed in the form of an XML file:  
**addobj.exe -t reseller -f <location\_of\_XML\_file> -u <parent\_username> -p <parent\_password>**
- When the arguments are passed in the form of a string containing XML data:  
**addobj.exe -t reseller -s <XML\_data\_as\_a\_string> -u <parent\_username> -p <parent\_password>**

### Arguments:

The parameters to be passed in the XML file for adding a reseller are given below.

```
<?xml version="1.0" encoding="utf-8" ?>
<reseller>
  <generalinfo>
    <property name="DisplayName">res1 name</property>
    <property name="Name">res1.com</property>
    <property name="ShortName">res1sn</property>
    <property name="TemplateName">resellerplan</property>
    <property name="ContactPhone">12345678</property>
    <property name="ContactEmail">abc@example.org</property>
  </generalinfo>
  <admin>
    <property name="FullName">Administrator</property>
    <property name="UserName">admin</property>
    <property name="Password">ensimpro</property>
    <property name="Email">xyz@example.org</property>
  </admin>
</reseller>
```

## Adding a site

### Syntax:

- When the arguments are passed in the form of an XML file:  
**addobj.exe -t org -f <location\_of\_XML\_file> -u <parent\_username> -p <parent\_password>**
- When the arguments are passed in the form of a string containing XML data:  
**addobj.exe -t org -s <XML\_data\_as\_a\_string> -u <parent\_username> -p <parent\_password>**

**Arguments:**

The parameters to be passed in the XML file for adding a site are given below.

```
<?xml version="1.0" encoding="utf-8" ?>
<org>
  <generalinfo>
    <property name="DisplayName">site1 name</property>
    <property name="Name">site1.com</property>
    <property name="ShortName">site1sn</property>
    <property name="TemplateName">test</property>
    <property name="ContactEmail">abc@example.org</property>
  </generalinfo>
  <admin>
    <property name="DisplayName">Administrator</property>
    <property name="UserName">admin</property>
    <property name="Password">ensimpro</property>
    <property name="Email">xyz@example.org</property>
  </admin>
  <service name="WebHosting" version="2.0.0">
    <property name="Type">ipbased</property>
    <!-- Type can be either "namebased" or "ipbased". -->
    <property name="IPSelection">XX.XX.XX.XX</property>
    <!-- IPSelection is only used in case of IP-based sites. The
    value can either be "auto" for automatic IP address selection or
    the IP address. Do not include this parameter if you are adding
    a name-based site. -->
  </service>
</org>
```

## Adding a user template

**Syntax:**

- When the arguments are passed in the form of an XML file:
 

```
addobj.exe -t usertemplate -f <location_of_XML_file> -u <parent_username> -p <parent_password>
```
- When the arguments are passed in the form of a string containing XML data:
 

```
addobj.exe -t usertemplate -s <XML_data_as_a_string> -u <parent_username> -p <parent_password>
```

**Arguments:**

The parameters to be passed in the XML file for adding a user template are given below. Please refer [“Parameters for creating user templates and updating users”](#) on page 1-7 for a detailed description of some of the parameters given below.

```
<?xml version="1.0" encoding="utf-8" ?>
<template>
  <generalinfo>
    <property name="name">test</property>
    <property name="description">Template added using cli</
    property>
    <property name="enabled">>true</property>
    <property name="shortname">site1sn</property>
    <!-- shortname refers to the short name of the site to which
    this user template needs to be added. -->
  </generalinfo>
  <service name="WebHosting" version="2.0.0">
    <ServiceComponent name="w3svc" version="2.0.0" enabled="1">
    </ServiceComponent>
    <ServiceComponent name="msftpsvc" version="2.0.0" enabled="1">
      <property name="IISPermRead" type="System.boolean">>true</
      property>
      <property name="IISPermWrite" type="System.boolean">>false</
      property>
      <property name="UserLog" type="System.boolean">>true</
      property>
      <property name="ContentUploader"
      type="System.boolean">>false</property>
    </ServiceComponent>
    <ServiceComponent name="frontpage" version="2.0.0" enabled="1">
      <property name="ContentUploader"
      type="System.boolean">>false</property>
    </ServiceComponent>
    <ServiceComponent name="mail" version="1.5.0" enabled="1">
      <property name="UserEnableWebAccess"
      type="System.boolean">>false</property>
      <property name="UserEnableForwards"
      type="System.boolean">>false</property>
      <property name="UserEnableAutoresponders"
      type="System.boolean">>false</property>
    </ServiceComponent>
  </service>
</template>
```

## Parameters for creating user templates and updating users

This section describes some of the parameters that are included in the XML data passed to **addobj.exe**, which is used for creating a user template, and **UpdateObj.exe**, which is used for updating a user. [Table 1-1](#) describes the parameters included in the **ServiceComponent** sections used in the XML files.

**Table 1-1. Description of parameters used for creating a user template and updating a user**

Parameter	Type	Description	Default value
<b>ServiceComponent name: msftpsvc</b>			
IISPermRead	Boolean	Enable read permission for IIS files	Must be manually specified as either true or false
IISPermWrite	Boolean	Enable write permission for IIS files	Must be manually specified as either true or false
UserLog	Boolean	Enable logging of user visits to the FTP site	Must be manually specified as either true or false
ContentUploader	Boolean	Allow user to access the site's Web site	Must be manually specified as either true or false
<b>ServiceComponent name: frontpage</b>			
ContentUploader	Boolean	Allow user to access the site's Web site	Must be manually specified as either true or false
<b>ServiceComponent name: mail</b>			
UserEnableWebAccess	Boolean	Enable Web access to the user	Must be manually specified as either true or false
UserEnableForwards	Boolean	Enable forwards for the user	Must be manually specified as either true or false
UserEnableAutoresponders	Boolean	Enable autoresponders for the user	Must be manually specified as either true or false

## Adding a user

### Syntax:

- When the arguments are passed in the form of an XML file:  
**addobj.exe -t user -f <location\_of\_XML\_file> -u <parent\_username> -p <parent\_password>**
- When the arguments are passed in the form of a string containing XML data:  
**addobj.exe -t user -s <XML\_data\_as\_a\_string> -u <parent\_username> -p <parent\_password>**

### Arguments:

The parameters to be passed in the XML file for adding a user are given below.



The parameters that do not have a value specified below are **optional**, and therefore these tags can have **empty** values.

```
<?xml version="1.0" encoding="utf-8" ?>
<user>
  <property name="username">user1</property>
  <property name="password">ensimpro</property>
  <property name="template">test</property>
  <property name="firstname"></property>
  <property name="middlename"></property>
  <property name="lastname"></property>
  <property name="admin"></property><!-- Indicates if the user is a
site administrator. Set to true if the user is to be created as a
site administrator. To create a normal user, set the value to
false, or leave the tag empty. --!>
  <property name="email"></property>
  <property name="phone"></property>
  <property name="description"></property>
  <property name="enabled">>true</property>
  <property name="street"></property>
  <property name="city"></property>
  <property name="state"></property>
  <property name="country"></property>
  <!-- country should include the two-character alphabetic country
code. For example, if you want to set country to United States,
then specify the value as US. -->
  <property name="company"></property>
  <property name="department"></property>
  <property name="office"></property>
  <property name="shortname">site1sn</property>
  <!-- shortname refers to the short name of the site to which this
user needs to be added. -->
</user>
```



## Deleting an object

**Call Name:** DeleteObj.exe

**Description:** Deletes an object such as a [reseller](#), a [site](#), a [user template](#), or a [user](#).

### Deleting a reseller

**Syntax:**

- When the arguments are passed in the form of an XML file:  
**DeleteObj.exe -t reseller -f <location\_of\_XML\_file> -u <parent\_username> -p <parent\_password>**
- When the arguments are passed in the form of a string containing XML data:  
**DeleteObj.exe -t reseller -s <XML\_data\_as\_a\_string> -u <parent\_username> -p <parent\_password>**

**Arguments:**

The parameters to be passed in the XML file for deleting a reseller are given below.

```
<?xml version="1.0" encoding="utf-8" ?>
<reseller>
  <property name="Name">res1.com</property>
  <property name="ShortName">res1sn</property>
</reseller>
```

### Deleting a site

**Syntax:**

- When the arguments are passed in the form of an XML file:  
**DeleteObj.exe -t org -f <location\_of\_XML\_file> -u <parent\_username> -p <parent\_password>**
- When the arguments are passed in the form of a string containing XML data:  
**DeleteObj.exe -t org -s <XML\_data\_as\_a\_string> -u <parent\_username> -p <parent\_password>**

**Arguments:**

The parameters to be passed in the XML file for deleting a site are given below.

```
<?xml version="1.0" encoding="utf-8" ?>
<org>
  <property name="Name">site1.com</property>
  <property name="ShortName">site1sn</property>
</org>
```

## Deleting a user template

### Syntax:

- When the arguments are passed in the form of an XML file:  
**DeleteObj.exe -t usertemplate -f <location\_of\_XML\_file> -u <parent\_username> -p <parent\_password>**
- When the arguments are passed in the form of a string containing XML data:  
**DeleteObj.exe -t usertemplate -s <XML\_data\_as\_a\_string> -u <parent\_username> -p <parent\_password>**

### Arguments:

The parameters to be passed in the XML file for deleting a user template are given below.

```
<?xml version="1.0" encoding="utf-8" ?>
<template>
  <property name="name">test</property>
</template>
```

## Deleting a user

### Syntax:

- When the arguments are passed in the form of an XML file:  
**DeleteObj.exe -t user -f <location\_of\_XML\_file> -u <parent\_username> -p <parent\_password>**
- When the arguments are passed in the form of a string containing XML data:  
**DeleteObj.exe -t user -s <XML\_data\_as\_a\_string> -u <parent\_username> -p <parent\_password>**

### Arguments:

The parameters to be passed in the XML file for deleting a user are given below.

```
<?xml version="1.0" encoding="utf-8" ?>
<user>
  <property name="name">user1@site1sn</property>
</user>
```

## Displaying the information of an object

**Call Name:** GetInfoObj.exe

**Description:** Displays the information of an object such as a [reseller](#), or a [site](#).

### Displaying the information of a reseller

**Syntax:**

- When the arguments are passed in the form of an XML file:  
**GetInfoObj.exe -t reseller -f <location\_of\_XML\_file> -u <parent\_username> -p <parent\_password>**
- When the arguments are passed in the form of a string containing XML data:  
**GetInfoObj.exe -t reseller -s <XML\_data\_as\_a\_string> -u <parent\_username> -p <parent\_password>**

**Arguments:**

The parameters to be passed in the XML file for displaying the information of a reseller are given below.

```
<?xml version="1.0" encoding="utf-8" ?>
<reseller>
  <property name="Name">res1.com</property>
  <property name="ShortName">res1sn</property>
</reseller>
```

### Displaying the information of a site

**Syntax:**

- When the arguments are passed in the form of an XML file:  
**GetInfoObj.exe -t org -f <location\_of\_XML\_file> -u <parent\_username> -p <parent\_password>**
- When the arguments are passed in the form of a string containing XML data:  
**GetInfoObj.exe -t org -s <XML\_data\_as\_a\_string> -u <parent\_username> -p <parent\_password>**

**Arguments:**

The parameters to be passed in the XML file for displaying the information of a site are given below.

```
<?xml version="1.0" encoding="utf-8" ?>
<org>
  <property name="Name">site1.com</property>
  <property name="ShortName">site1sn</property>
</org>
```

## Updating the information of an object

**Call Name:** UpdateObj.exe

**Description:** Updates the information of an object such as a [reseller](#), a [site](#), or a [user](#).

### Updating the information of a reseller

**Syntax:**

- When the arguments are passed in the form of an XML file:  
**UpdateObj.exe -t reseller -f <location\_of\_XML\_file> -u <parent\_username> -p <parent\_password>**
- When the arguments are passed in the form of a string containing XML data:  
**UpdateObj.exe -t reseller -s <XML\_data\_as\_a\_string> -u <parent\_username> -p <parent\_password>**

**Arguments:**

The parameters to be passed in the XML file for updating the information of a reseller are given below.

```
<?xml version="1.0" encoding="utf-8" ?>
<reseller>
  <generalinfo>
    <property name="DisplayName">res1 name</property>
    <property name="ContactName">res1</property>
    <property name="ShortName">res1sn</property>
    <property name="ContactPhone">12345678</property>
    <property name="ContactEmail">abc@example.org</property>
  </generalinfo>
  <service add="0"> <!-- If the add flag is equal to "0", then the
  quota defined below is decreased by the value specified. If the
  flag is equal to "1", then the quota is increased by the value
  specified. -->
  <!-- If you want to set the value of a quota as unlimited, then the
  value of that quota should be set to "-1" and the add flag set to
  "1". If a quota has unlimited value, and you want to remove it,
  then set the value of the quota to "-1" and the add flag to "0".-->
    <property quota="Disk Space">0</property>
    <property quota="Number of Installations of MSDE">0</property>
    <property quota="Number of Installations of mysql">1</property>
    <property quota="# of MySQL Databases">0</property>
    <property quota="Number of Installations of w3svc">2</property>
    <property quota="Number of Installations of webalizer">3</
    property>
    <property quota="Bandwidth">0</property>
    <property quota="Number of Installations of Power Tools">4</
    property>
    <property quota="Number of Installations of frontpage">0</
    property>
```

```

    <property quota="# of Access DSNs">5</property>
    <property quota="Number of Installations of msftpsvc">0</
    property>
    <property quota="Number of Installations of php">4</property>
    <property quota="# of SubDomains">3</property>
    <property quota="# of DNS Zones">2</property>
    <property quota="Number of Installations of perl">1</property>
    <property quota="# of SQL DSNs">0</property>
    <property quota="# of MyODBC DSNs">0</property>
    <property quota="Number of Users">0</property>
    <property quota="Number of Installations of odbc">0</property>
    <property quota="Number of Installations of Coldfusion">0</
    property>
    <property quota="Number of Installations of filemanager">0</
    property>
    <property quota="Instances of DNS">5</property>
  </service>
</reseller>

```

## Updating the information of a site

### Syntax:

- When the arguments are passed in the form of an XML file:  
**UpdateObj.exe -t org -f <location\_of\_XML\_file> -u <parent\_username> -p <parent\_password>**
- When the arguments are passed in the form of a string containing XML data:  
**UpdateObj.exe -t org -s <XML\_data\_as\_a\_string> -u <parent\_username> -p <parent\_password>**

### Arguments:

The parameters to be passed in the XML file for updating the information of a site are given below. Please refer [“Parameters used for updating a site” on page 1-17](#) for a detailed description of some of the parameters given below.

```

<?xml version="1.0" encoding="utf-8" ?>
<org>
  <generalinfo>
    <property name="DisplayName">site1 name</property>
    <property name="ContactName">site1</property>
    <property name="ShortName">site1sn</property>
    <property name="ContactPhone">12345678</property>
    <property name="ContactEmail">abc@example.org</property>
  </generalinfo>
  <admin>
    <property name="DisplayName">Administrator</property>
    <property name="UserName">admin@site1sn</property>

```

```

    <property name="Password">ensimpro</property>
    <property name="Email">xyz@example.org</property>
</admin>
<service name="WebHosting" version="2.0.0">
<generalinfo>
    <property name="IsIpbased" type="System.boolean">false</
    property>
    <property name="IPSelection" type="System.boolean">false</
    property>
    <property name="ip" type="string">XX.XX.XX.XX</property>
    <!-- For a name-based site, the above parameter must contain the
    IP address of the site. -->
    <property name="BandwidthQuota" type="System.Int32">11</
    property>
    <property name="BillingCycleStartDay" type="System.Int32">11</
    property>
    <property name="BandwidthActionSendMail"
    type="System.boolean">false</property>
    <property name="BandwidthCapped" type="System.boolean">>true</
    property>
    <property name="DiskQuota" type="System.Int32">110</property>
    <property name="MaxUsers" type="System.Int64">6</property>
</generalinfo>
<ServiceComponent name="msdns" version="2.0.0" enabled="1">
<!-- If the enabled flag is equal to "1", then the service
component is added or updated. If the flag is equal to "0", then
the service component is deleted. -->
    <property name="NumDNSZones" type="System.double">1</property>
    <property name="AllowSubdomainsOnly"
    type="System.boolean">true</property>
    <property name="AllowReverseZone" type="System.boolean">true</
    property>
</ServiceComponent>
<ServiceComponent name="msftpsvc" version="2.0.0" enabled="1">
    <property name="UserIsolationMode" type="System.Int32">0</
    property>
    <property name="AnonymousConnections"
    type="System.boolean">false</property>
    <property name="MaxConnections" type="System.Int64">1000</
    property>
    <property name="Timeout" type="System.Uint32">800</property>
    <property name="SiteLogs" type="System.boolean">true</property>
    <property name="LogType" type="String">W3C Extended Log File
    Format</property>
    <property name="FtpPort" type="System.Int32">1000X</property>
    <!-- Do not include this parameter if you are updating an IP-
    based site. For more details about this parameter, refer
    FtpPort in Parameters used for updating a site. -->
    <property name="IISPermRead" type="System.boolean">true</
    property>

```

```

<property name="IISPermWrite" type="System.boolean">false</
property>
<property name="MessageWelcome" type="String">Welcome to our
site</property>
<property name="MessageExit" type="String">Thank you for
visiting our site</property>
<property name="MessageMaxClients" type="String">There are too
many users logged into our site. Please try later</property>
</ServiceComponent>
<ServiceComponent name="w3svc" version="2.0.0" enabled="1">
  <property name="EnableDotNet" type="System.boolean">>true</
property>
  <property name="ASPNetVersion" type="String">1.1.4322.0</
property>
  <property name="DefaultSSL" type="System.boolean">false</
property>
  <property name="SharedSSL" type="System.boolean">false</
property>
  <property name="SharedSSLHost" type="String"></property> <!--
If the value of the SharedSSL property is true, then the value
of the SharedSSLHost property should include a valid host name,
for example, host.example.org. -->
  <property name="SSI" type="System.boolean">>true</property>
  <property name="HostHeaders" type="System.boolean">>true</
property>
  <property name="UseAsPDH" type="System.boolean">false</
property>
  <property name="MaxSubDomains" type="System.Int32">10</
property>
  <property name="LogType" type="String">W3C Extended Log File
Format</property>
  <property name="ChangeLogFormat" type="System.boolean">>true</
property>
  <property name="Timeout" type="System.Int32">900</property>
  <property name="MaxConnections" type="System.Int32">1000</
property>
  <property name="Hits" type="System.Int32">1</property>
  <property name="ReverseDNS" type="System.boolean">false</
property>
  <property name="EnableBWQuota" type="System.boolean">false</
property>
  <property name="BandwidthQuota" type="System.Int32">1024</
property>
  <property name="IISPermRead" type="System.boolean">>true</
property>
  <property name="IISPermWrite" type="System.boolean">false</
property>
  <property name="IISPermDirectoryBrowsing"
type="System.boolean">false</property>
  <property name="IISPermExec" type="System.Int32">1</property>

```

```
<property name="CPUrl" type="String">server1</property>
</ServiceComponent>
<ServiceComponent name="filemanager" version="2.0.0" enabled="1"/>
<ServiceComponent name="perl" version="2.0.0" enabled="1"/>
<ServiceComponent name="urchin" version="2.0.0" enabled="1"/>
<ServiceComponent name="webalizer" version="1.0.0" enabled="1"/>
<ServiceComponent name="msde" version="1.5.0" enabled="1"/>
<ServiceComponent name="mysql" version="1.5.0" enabled="1">
  <property name="TotalDatabaseCount" type="System.Int32">5</
  property>
</ServiceComponent>
<ServiceComponent name="coldfusion" version="1.0.0" enabled="1"/>
<ServiceComponent name="frontpage" version="2.0.0" enabled="1">
  <property name="EnableAuthoring" type="System.boolean">true</
  property>
  <property name="RequireSSL" type="System.boolean">false</
  property>
  <property name="MailSender" type="String">abc@xyz.com</
  property>
  <property name="MailReplyTo" type="String">def@xyz.com</
  property>
  <property name="SMTPHost" type="String">smtp.xyz.com</property>
</ServiceComponent>
<ServiceComponent name="php" version="2.0.0" enabled="1">
  <property name="PhpType" type="System.Int32">1</property>
</ServiceComponent>
<ServiceComponent name="odbc" version="2.0.0" enabled="1">
  <property name="TotalSQLDSNCount" type="System.Int32">5</
  property>
  <property name="TotalAccessDSNCount" type="System.Int32">5</
  property>
  <property name="TotalMyODBCDSNCount" type="System.Int32">5</
  property>
</ServiceComponent>
<ServiceComponent name="mail" version="1.5.0" enabled="1">
  <property name="EnableMailingLists"
  type="System.boolean">false</property>
  <property name="EnableDomainAliases"
  type="System.boolean">false</property>
  <property name="EnableDistributionLists"
  type="System.boolean">true</property>
  <property name="EnableSpamFilters" type="System.boolean">true</
  property>
  <property name="EnableUserAliases" type="System.boolean">true</
  property>
  <property name="EnableWebAccess" type="System.boolean">true</
  property>
```



```

    <property name="EnableForwards" type="System.boolean">true</
    property>
    <property name="EnableAutoresponders"
    type="System.boolean">true</property>
  </ServiceComponent>
  <ServiceComponent name="powertools" version="1.0.0" enabled="1">
    <property name="PowerToolList" type="System.Int32 []">1,2</
    property>
  </ServiceComponent>
</service>
</org>

```

 **Note**

To remove a service component from a site, set the enabled attribute to false.

 **Important**

While adding service components to a site, the parent service component (such as `w3svc`) must be listed before the dependent service components (such as `webalizer`, `msde`, `frontpage`). While removing service components from a site, the dependent service components must be listed before the parent service component.

## Parameters used for updating a site

This section describes some of the parameters that are included in the XML files and passed to `UpdateObj.exe` for updating a site. [Table 1-2](#) describes the parameters included in the **Service** and **ServiceComponent** sections used in the XML files.

**Table 1-2. Description of parameters used for updating a site**

Parameter	Type	Description	Default value
<b>Service name: WebHosting</b>			
<code>ip</code>	String	IP address of the site	None. Value must be specified
<code>IsIpbased</code>	Boolean	Is the site an IP-based site?	False
<code>IPSelection</code>	Boolean	Was the <code>IPSelection</code> parameter equal to "auto" or did it include the IP address when the site was created? If its value was "auto", then the value of this parameter should be "False". If it included the IP address, then the value of this parameter should be "True".  Note: This parameter should be used only for IP-based sites.	False
<code>BillingCycleStartDay</code>	Integer	Start of the billing cycle (day of the month). Its value ranges from 1 to 31.	Must be manually specified

**Table 1-2. Description of parameters used for updating a site (continued)**

Parameter	Type	Description	Default value
BandwidthActionSendMail	Boolean	Send an email message when the bandwidth usage is exceeded	True
BandwidthCapped	Boolean	Redirect the user to the “bandwidth exceeded” page when the limit is exceeded	False
BandwidthQuota	Integer	Bandwidth quota limit Note: If BandwidthQuota = -1, then its value is set as unlimited.	1024
DiskQuota	Integer	Maximum disk space allowed Note: If DiskQuota = -1, then its value is set as unlimited.	25
MaxUsers	Long	Maximum number of users allowed Note: If Number of Users = -1, then its value is set as unlimited.	5
<b>ServiceComponent name: msdns</b>			
NumDNSZones	Integer	Number of DNS zones	5
AllowSubdomainsOnly	Boolean	Prevent the site from adding arbitrary zones (sub-zones allowed)	True
AllowReverseZone	Boolean	Allow the site to add reverse records	False
<b>ServiceComponent name: w3svc</b>			
EnableDotNet	Boolean	Enable support for .NET applications on the Web site.	False
ASPNetVersion	String	The version of the Microsoft .NET framework to be used by the .NET applications on the Web site. To view the list of the .NET framework versions available on the Ensim Pro server, open the <b>Registry Editor</b> , and expand <b>My Computer &gt; HKEY_LOCAL_MACHINE &gt; SOFTWARE &gt; Microsoft &gt; ASP.NET</b> . You must specify the <b>complete</b> version of the .NET framework. Note: This parameter is applicable only if you have <b>enabled</b> the EnableDotNet parameter mentioned above.	Must be manually specified <b>Example.</b> 1.1.4322.0
SSI	Boolean	Enable Server Side Includes for the site	True
ThirdPartySSL CertificateInstalled	Boolean	Is a third-party SSL certificate installed?	False

**Table 1-2. Description of parameters used for updating a site (continued)**

Parameter	Type	Description	Default value
DefaultSSL	Boolean	Enable Default SSL certificate Note: This parameter should be used only for IP-based sites.	False
SSL	Boolean	Enable SSL	False
SiteLogs	Boolean	Enable site logging	True
SharedSSLHost	String	FQDN of the SSL host	Must be manually specified <b>Example.</b> host.example.org
HostHeaders	Boolean	Enable host headers	True
UseAsPDH	Boolean	Use as a Park Domain Host	False
MaxSubDomains	Integer	Maximum number of sub-domains Note: If MaxSubDomains = -1, then its value is set as unlimited.	10
LogType	String	Format of the log file. The value of LogType can be any one of the following values: <ul style="list-style-type: none"> <li>W3C Extended Log File Format</li> <li>Microsoft IIS Log File Format</li> <li>NCSA Common Log File Format</li> </ul>	W3C Extended Log File Format
ChangeLogFormat	Boolean	Allow log formats to be changed	True
MaxConnections	Integer	Maximum number of connections Note: If MaxConnections = -1, then its value is set as unlimited.	1000
Timeout	Integer	Web server connection timeout	900 seconds
Hits	Integer	Expected number of hits per day <ul style="list-style-type: none"> <li>If Hits = 0, the number of hits expected per day is less than 10000.</li> <li>If Hits = 1, the number of hits expected per day is less than 100000.</li> <li>If Hits = 2, the number of hits expected per day is more than 100000.</li> </ul>	1 (less than 100000)
ReverseDNS	Boolean	Enable Reverse DNS lookup	True
EnableBWQuota	Boolean	Allow bandwidth usage to be controlled	False
BandwidthQuota	Integer	Maximum bandwidth usage allowed	1024
IISPermRead	Boolean	Enable read permission for IIS files	True
IISPermWrite	Boolean	Enable write permission for IIS files	False
IISPermDirectoryBrowsing	Boolean	Enable Directory Browsing	False

**Table 1-2. Description of parameters used for updating a site (continued)**

Parameter	Type	Description	Default value
IISPermExec	Integer	Permissions for executing files <ul style="list-style-type: none"> <li>If IISPermExec = 0, scripts and executables are not allowed.</li> <li>If IISPermExec = 1, only scripts are allowed.</li> <li>If IISPermExec = 2, both CGI scripts and executables are allowed.</li> </ul>	1 (Allow only scripts)
IISAppIProtection	Integer	Pool type <ul style="list-style-type: none"> <li>If IISAppIProtection = 0, it is a shared pool.</li> <li>If IISAppIProtection = 1, it is a dedicated pool.</li> </ul>	0 (shared pool)
CPUrl	String	URL of the control panel	Computer name or IP address of the server
<b>ServiceComponent name: msftpsvc</b>			
MaxConnections	Long	Maximum number of connections Note: If MaxConnections = -1, then its value is set as unlimited.	5
AnonymousConnections	Boolean	Enable anonymous connections	False
UserIsolationMode	Integer	Method for isolation users (Custom method/Native IIS 6) <ul style="list-style-type: none"> <li>If UserIsolationMode = 0, Custom method is used.</li> <li>If UserIsolationMode = 1, Native IIS 6 method is used.</li> </ul>	0 (Custom method)
FtpPort	Integer	FTP port number Note: Do not include this parameter if you are updating an IP-based site. For a name-based site, its value is 1000X, ranging from 10000 to 65535.	Must be manually specified
Timeout	Integer	Connection timeout period	900
SiteLogs	Boolean	Enable site logs	True
LogType	String	Select the type of log The value of LogType can be either one of the values given below. <ul style="list-style-type: none"> <li>W3C Extended Log File Format</li> <li>Microsoft IIS Log File Format</li> </ul>	W3C Extended Log File Format
IISPermRead	Boolean	Enable download permission for IIS files	True
IISPermWrite	Boolean	Enable upload permission for IIS files	False

**Table 1-2. Description of parameters used for updating a site (continued)**

Parameter	Type	Description	Default value
MessageExit	String	The message displayed when a user logs out of the FTP session.	Exit message
MessageWelcome	String	The message displayed when a user logs in to the FTP session.	Welcome message
MessageMaxClients	String	Message displayed when the connection reaches the maximum limit	Maximum connection message
<b>ServiceComponent name: frontpage</b>			
RequireSSL	Boolean	Enable HTTPS Secure Communications  Note: This parameter should be used only for IP-based sites.	False
EnableAuthoring	Boolean	Enable authoring	True
MailSender	String	Address of the sender	Must be manually specified
MailReplyTo	String	Address of the receiver	Must be manually specified
SMTPHost	String	SMTP mail server	Must be manually specified
<b>ServiceComponent name: php</b>			
PhpType	Integer	Configure PHP as CGI/ISAPI <ul style="list-style-type: none"> <li>If PhpType = 0, it is ISAPI.</li> <li>If PhpType = 1, it is CGI.</li> </ul>	1 (CGI)
<b>ServiceComponent name: mysql</b>			
TotalDatabaseCount	Integer	Maximum number of MySQL databases allowed  Note: If TotalDatabaseCount=-1, then its value is set as unlimited.	1
<b>ServiceComponent name: odbc</b>			
TotalSQLDSNCount	Integer	Maximum number of SQL data sources allowed  Note: If TotalSQLDSNCount = -1, then its value is set as unlimited.	5
TotalAccessDSNCount	Integer	Maximum number of Microsoft Access data sources allowed  Note: If TotalAccessDSNCount = -1, then its value is set as unlimited.	5

**Table 1-2. Description of parameters used for updating a site (continued)**

Parameter	Type	Description	Default value
TotalMyODBCDSNCount	Integer	Maximum number of MyODBC data sources allowed  Note: If TotalMyODBCDSNCount = -1, then its value is set as unlimited.	5
<b>ServiceComponent name: Mail</b>			
EnableMailingLists	Boolean	Enable mailing lists	False
EnableDomainAliases	Boolean	Enable domain aliases	False
EnableDistributionLists	Boolean	Enable distribution lists	True
EnableSpamFilters	Boolean	Enable spam filters	True
EnableUserAliases	Boolean	Enable user aliases	True
EnableWebAccess	Boolean	Enable Web access	True
EnableForwards	Boolean	Enable forwards	True
EnableAutoresponders	Boolean	Enable autoresponders	True
<b>ServiceComponent name: Powertools</b>			
PowerToolList	Array of integers	List of Power Tools: <ul style="list-style-type: none"> <li>• 1 represents Gallery</li> <li>• 2 represents WordPress Web log</li> <li>• 3 represents PhpBB bulletin board</li> <li>• 4 represents Community server</li> <li>• 5 represents DotNetNuke</li> </ul>	Must be manually specified  <b>Example:</b> To include all Power Tools, specify 1,2,3,4,5

## Updating the information of a user

### Syntax:

- ❑ When the arguments are passed in the form of an XML file:  
**UpdateObj.exe -t user -f <location\_of\_XML\_file> -u <parent\_username> -p <parent\_password>**
- ❑ When the arguments are passed in the form of a string containing XML data:  
**UpdateObj.exe -t user -s <XML\_data\_as\_a\_string> -u <parent\_username> -p <parent\_password>**

### Arguments:

The parameters to be passed in the XML file for updating the information of a user are given below. Please refer “Parameters for creating user templates and updating users” on page 1-7 for a detailed description of some of the parameters given below.

#### Note

The parameters that do not have a value specified below are **optional**, and therefore these tags can have **empty** values.

```

<?xml version="1.0" encoding="utf-8" ?>
<user>
  <generalinfo>
    <property name="username">user1@site1sn</property>
    <property name="firstname"></property>
    <property name="middlename"></property>
    <property name="lastname"></property>
    <property name="admin"></property>
    <property name="email"></property>
    <property name="phone"></property>
    <property name="description"></property>
    <property name="enabled">true</property>
    <property name="street"></property>
    <property name="city"></property>
    <property name="state"></property>
    <property name="country"></property>
    <!-- country should include the two-character alphabetic
country code. For example, if you want to set country to United
States, then specify US as its value. -->
    <property name="company"></property>
    <property name="department"></property>
    <property name="office"></property>
    <property name="shortname">site1sn</property>
    <!-- shortname refers to the short name of the site to which
this user needs to be added. -->
  </generalinfo>
  <service name="WebHosting" version="2.0.0">
    <ServiceComponent name="w3svc" version="2.0.0" enabled="1">
      </ServiceComponent>
    <ServiceComponent name="msftpsvc" version="2.0.0" enabled="1">
      <property name="IISPermRead" type="System.boolean">true</
property>
      <property name="IISPermWrite" type="System.boolean">>false</
property>
      <property name="UserLog" type="System.boolean">true</
property>
      <property name="ContentUploader"
type="System.boolean">>false</property>
    </ServiceComponent>
    <ServiceComponent name="frontpage" version="2.0.0" enabled="1">
      <property name="ContentUploader"
type="System.boolean">>false</property>
    </ServiceComponent>
    <ServiceComponent name="mail" version="1.5.0" enabled="1">
      <property name="UserEnableWebAccess"
type="System.boolean">>false</property>
  </service>
</user>

```

```

        <property name="UserEnableForwards"
        type="System.boolean">false</property>
        <property name="UserEnableAutoresponders"
        type="System.boolean">false</property>
    </ServiceComponent>
</service>
</user>

```

## Exporting and importing site information

The export CLI allows you to store the current state of a site in an XML file. The Import CLI allows you to restore a site to a previously exported state. This feature allows you to restore the state of a site in case the entire data or a specific service of that site is corrupted.

You can specify the location where the exported files are stored in the *export import settings* under *Preferences* in the service provider control panel. The Export CLI creates subdirectories for the exported files under this location. The data for each site is saved to an XML file called **info.xml**.

The location of the file is determined as follows:

- If the export CLI is run with a reseller login, the path is  
*<ExportLocation>\ISP\<Machine Name>\Reseller\<Reseller Name>\Site\<Site Name>\<Time Stamp>*
  - If the export CLI is run with the service provider login, the path is  
*<ExportLocation>\ISP\<Machine Name>\Site\<Site Name>\<Time Stamp>*
- where:
- ❑ *<ExportLocation>* is the location specified by the service provider in the *export import settings* under *Preferences* in the control panel. For example, **C:\epw\_exportimport**.
  - ❑ *<Machine Name>* is the name of the server on which Ensim Pro is running.
  - ❑ *<Reseller Name>* is the name of the reseller. This is added to the path when the command is invoked with a reseller login.
  - ❑ *<Site Name>* is the name of the site being exported.
  - ❑ *<Time Stamp>* is the timestamp for the export operation specified in the *mm-dd-yy hh-mm-ss ms* format. This allows you to maintain different versions of exported data for a site.

While importing data, you have to specify the complete path of the **info.xml** file. Do not move the exported files manually to a new location. The exported files have to be imported from the same location where they were created.

You can export and import a site with the following options:

- Configuration settings of the site and all its users
- Configuration settings of the site and its default site administrator
- Configuration settings and service-specific data of the site and all its users



- Configuration settings and service-specific data of the site and its default site administrator

#### Note

The **configuration settings** of a site refer to the options specified while adding or editing the site, such as the *Total number of zones* option in the Microsoft DNS service component.

The **service-specific data** of a site refers to the options and the files or directories created and managed by the site administrator, such as the name of the DNS zone created by the site administrator.

You can export and import site information using the **ExportObj.exe** and **ImportObj.exe** calls, which are described in the following sections.

## Exporting site information

**Call Name:** ExportObj.exe

**Description:** Exports site information from the Ensim Pro to a directory on the same server.

**Syntax:**

- When the arguments are passed in the form of an XML file:  
**ExportObj.exe -t org -f <location\_of\_XML\_file> -u <parent\_username> -p <parent\_password>**
- When the arguments are passed in the form of a string containing XML data:  
**ExportObj.exe -t org -s <XML\_data\_as\_a\_string> -u <parent\_username> -p <parent\_password>**

### Arguments:

The parameters to be passed in the XML file for exporting the site information are given below.

```
<?xml version="1.0" encoding="utf-8" ?>
<orglist>
  <org name="site1.com">
    <property name="ShortName" type="string">site1sn</property>
    <property name="ConfigOnly" type="System.Boolean">>false</property> <!-- Set to "true" to export only the configuration settings of a site; set to "false" to export both the configuration settings and the service-specific data.-->
    <property name="WithAllUsers" type="System.Boolean">>false</property> <!-- Set to "true" to export the information for all users; set to "false" to export only the default site administrator's information.-->
  </org>
</orglist>
```

## Importing site information

**Call Name:** ImportObj.exe

**Description:** Imports the site information from an exported file to Ensim Pro.

**Syntax:**

- When the arguments are passed in the form of an XML file:  
**ImportObj.exe -t org -f <location\_of\_XML\_file> -u <parent\_username> -p <parent\_password>**
- When the arguments are passed in the form of a string containing XML data:  
**ImportObj.exe -t org -s <XML\_data\_as\_a\_string> -u <parent\_username> -p <parent\_password>**

### Arguments:

The parameters to be passed in the XML file for exporting site information are given below:

```
<?xml version="1.0" encoding="utf-8" ?>
<orglist>
  <org name="site1.com">
    <property name="ShortName" type="string">site1sn</property>
    <property name="ExportImportPath"
type="string">C:\exportdata\ISP\Server1\Site\Site1.com\01-28-06
23-59-59 50 <!-- Specify the complete path of the directory that
contains the exported file (info.xml). The complete path of the
exported file is defined as <ExportLocation>\ISP\<Machine
Name>\Site\<Site Name>\<Time Stamp>, or
<ExportLocation>\ISP\<Machine Name>\Reseller\<Reseller
Name>\Site\<Site Name>\<Time Stamp>. For more information on
the export path, see the section The location of the exported file.-->
</property>
    <property name="ConfigOnly" type="System.Boolean">>false</
property> <!-- Set to "true" to import only the configuration settings
of a site; set to "false" to import both the configuration
settings and the service-specific data.-->
    <property name="WithAllUsers" type="System.Boolean">>false</
property> <!-- Set to "true" to import the information for all
users; set to "false" to import only the default site
administrator's information.-->
  </org>
</orglist>
```

## Updating the Ensim Pro license

**Call Name:** UpdateLicense.exe

**Description:** Updates the license for using Ensim Pro.

**Syntax:**

- When the arguments are passed in the form of an XML file:  
**UpdateLicense.exe -t updatelicense -f <location\_of\_XML\_file> -u <parent\_username> -p <parent\_password>**
- When the arguments are passed in the form of a string containing XML data:  
**UpdateLicense.exe -t updatelicense -s <XML\_data\_as\_a\_string> -u <parent\_username> -p <parent\_password>**

### Note

**<parent\_username>** and **<parent\_password>** refer to the username and password for logging in to the Ensim Pro control panel as the **server administrator**.

### Arguments:

The parameters to be passed in the XML file for updating the license are given below.

```
<?xml version="1.0" encoding="utf-8" ?>
<license>
  <property name="licensekey">AAAAA11111BBBBB22222CCCCC</property>
</license>
```



# Changing the network settings of your server

## Introduction

This section explains how to change the network settings of the Ensim Pro server. Topics in this chapter include:

- “Changing the network settings of Ensim Pro server” on page 2-1
- “Adding a new IP address to your server’s network card” on page 2-5

## Changing the network settings of Ensim Pro server

This section describes the process of changing the network settings of your Ensim Pro server using either **Networkconfiguration.exe** or **NetworkconfigurationCLI.exe**.

**Networkconfiguration.exe** and **NetworkconfigurationCLI.exe** are tools included with Ensim Pro that allow you to change either the IP address or the Fully Qualified Domain Name (FQDN) of the server on which Ensim Pro is installed, or both. This utility will change the IP address of all name-based sites that use the IP address of the Ensim Pro server.

### Note

Please notify the site administrators about the change in the IP address for these name-based sites.

You can change the network settings of your Ensim Pro server by either using the [graphical interface](#) provided by **Networkconfiguration.exe**, or using the [command line interface \(CLI\)](#) provided by **NetworkconfigurationCLI.exe**.

## Using the graphical interface (Networkconfiguration.exe)

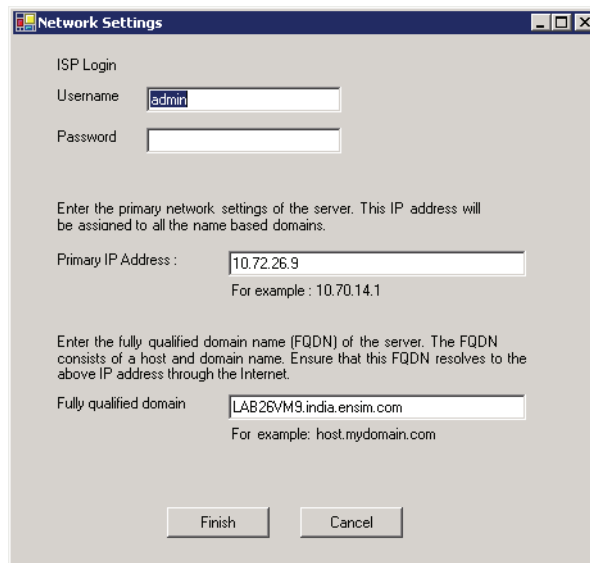
This section provides instructions for using **Networkconfiguration.exe** to change the network settings of your Ensim Pro server.

### Procedure

To change the network settings of Ensim Pro server using the graphical interface:

- 1 Connect to the Ensim Pro server using the console or terminal services and log in as the administrator.
- 2 Browse to `<Ensim_Pro_install_path>\cp\admin\bin` directory, where `<Ensim_Pro_install_path>` is the location of the Ensim Pro installation directory. If Ensim Pro is installed in the default location, then the path is `C:\Program Files\Ensim\WEBppliance\cp\admin\bin`.

- 3 Run **Networkconfiguration.exe** located in this directory.  
The *Network Settings* window opens.



Network Settings

ISP Login

Username:

Password:

Enter the primary network settings of the server. This IP address will be assigned to all the name based domains.

Primary IP Address:   
For example: 10.70.14.1

Enter the fully qualified domain name (FQDN) of the server. The FQDN consists of a host and domain name. Ensure that this FQDN resolves to the above IP address through the Internet.

Fully qualified domain:   
For example: host.mydomain.com

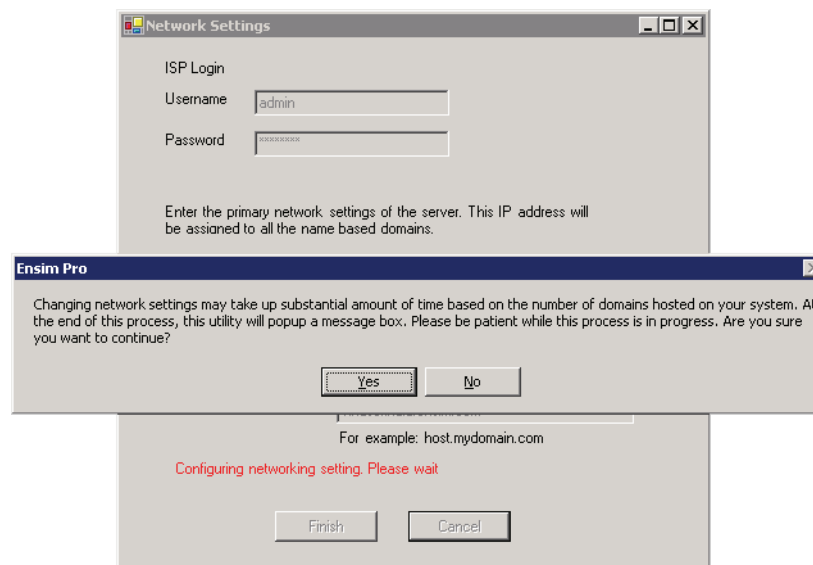
Finish Cancel

- 4 In the *Network Settings* window, enter the Server Administrator's password, the new IP address, and the new FQDN of the server.

#### Important

Please ensure that the new IP address is present in the list of IP addresses in the network settings of your server's network card. To add a new IP address to the list, please refer "[Adding a new IP address to your server's network card](#)" on page 2-5.

- 5 Click **Finish**.



Network Settings

ISP Login

Username:

Password:

Enter the primary network settings of the server. This IP address will be assigned to all the name based domains.

Primary IP Address:   
For example: 10.70.14.1

Enter the fully qualified domain name (FQDN) of the server. The FQDN consists of a host and domain name. Ensure that this FQDN resolves to the above IP address through the Internet.

Fully qualified domain:   
For example: host.mydomain.com

Finish Cancel

Ensim Pro

Changing network settings may take up substantial amount of time based on the number of domains hosted on your system. At the end of this process, this utility will popup a message box. Please be patient while this process is in progress. Are you sure you want to continue?

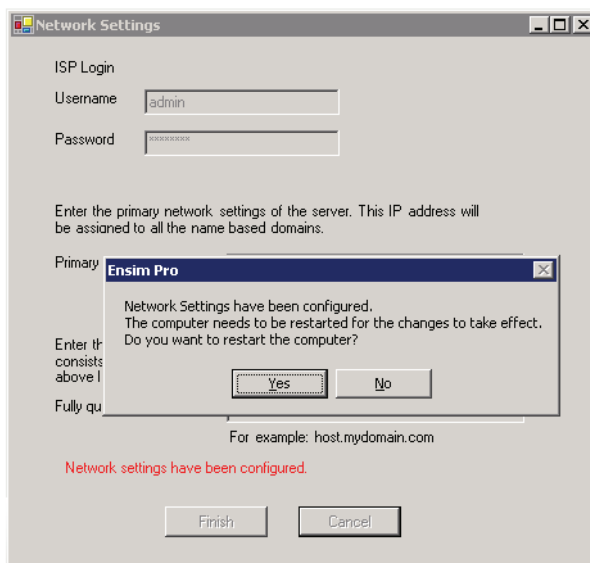
Yes No

For example: host.mydomain.com

Configuring networking setting. Please wait

Finish Cancel

- 6 Click **Yes**.



- 7 After the network settings have been changed, click **Yes** to restart the server and **No** to cancel the restart.

The network settings of the server are changed after it is restarted.

- 8 To confirm the new settings of the Ensim Pro server:
- a Open your Web browser.
  - b In the **Address** field of your Web browser, type the URL: **https://<server\_name>/cp** where **<server\_name>** is the FQDN or IP address of the Ensim Pro server. The Log in page opens.
  - c In the **username** text box, type **admin**.
  - d In the **password** text box, enter your password.
  - e Click **Log In**.
- The server administrator home page opens.

### Important

If the **IMail Server** add-on is installed on your Ensim Pro server, and you have changed the **FQDN** of the Ensim Pro server using `Networkconfiguration.exe`, go to [“Configuring IMail after changing the FQDN of the server” on page 2-5](#).

## Using the command line interface (NetworkconfigurationCLI.exe)

This section provides instructions for using NetworkconfigurationCLI.exe to change the network settings of your Ensim Pro server.

### Procedure

To change the network settings of Ensim Pro server using the CLI:

- 1 Connect to the Ensim Pro server using the console or terminal services and log in as the administrator.
- 2 Open a command window, and change to `<Ensim_Pro_install_path>\cp\admin\bin` directory, where `<Ensim_Pro_install_path>` is the location of the Ensim Pro installation directory. If Ensim Pro is installed in the default location, then the path is `C:\Program Files\Ensim\WEBppliance\cp\admin\bin`.
- 3 Type the following command on the command line.

```
NetworkconfigurationCLI.exe <server_IP_address> <server_FQDN> <username>
<password> <restart_now>
```

where:

- `<server_IP_address>` is the new IP address of the Ensim Pro server
- `<server_FQDN>` is the new Fully Qualified Domain Name (FQDN) of the server

### Note

If you want to change only one parameter, either the server's IP address or its FQDN, ensure that you enter the current value of the other parameter.

- `<username>` is the server administrator's login name for logging onto the Ensim Pro control panel.
- `<password>` is the server administrator's password for logging onto the Ensim Pro control panel
- `<restart_now>` refers to whether you want to restart the server after executing the command or not. If you want to restart the server, type **yes**; if not, type **no**.

### Note

The network settings of the server are changed only **after** it is restarted.

### Example:

If you want to change your Ensim Pro server's IP address to 192.0.34.166, and its FQDN to example.net, then run the following command.

```
NetworkconfigurationCLI.exe 192.0.34.166 example.net admin ensimpro yes
```

If you want to change only the server's IP address to 192.0.34.100, then run the following command with the server's current FQDN.

```
NetworkconfigurationCLI.exe 192.0.34.100 example.net admin ensimpro yes
```

### Important

If the **IMail Server** add-on is installed on your Ensim Pro server, and you have changed the **FQDN** of the Ensim Pro server using NetworkconfigurationCLI.exe, go to ["Configuring IMail after changing the FQDN of the server" on page 2-5](#).



## Configuring IMail after changing the FQDN of the server

If you have changed the **FQDN** of the server using either `Networkconfiguration.exe` or `NetworkconfigurationCLI.exe`, you have to reconfigure **IMail** to create users provisioned with IMail for new sites.

### Procedure

To configure IMail after changing the FQDN of the server:

- 1 On the Ensim Pro server, click **Start > Programs > IMail**, then click **IMail Administrator**.
- 2 In the *IMail Administrator* window, expand **IMail Administrator > localhost**, then click the **new FQDN** of the server.
- 3 In the right pane, click the **General** tab, and select the **IMail Database** in the *User Database Type* section.
- 4 Click **Apply**.
- 5 Close the *IMail Administrator* window.

IMail is configured successfully. You can now create users provisioned with IMail for new sites.

## Adding a new IP address to your server's network card

This section describes the process of adding a new IP address to the list of IP addresses in the network settings of your server's network card.

### Procedure

To add a new IP address:

- 1 Connect to the Ensim Pro server using the console or terminal services and log in as the administrator.
- 2 Click **Start > Settings > Control Panel**.
- 3 Double-click **Network Connections**. The *Network Connections* window opens.
- 4 In the *Network Connections* window, right-click **Local Area Connections** (or the network connection you are using with Ensim Pro) and choose **Properties**. The *Local Area Connections* window opens.
- 5 In the *Local Area Connections* window, select **Internet Protocol (TCP/IP)** and click **Properties**. The *Internet Protocol (TCP/IP)* window opens.
- 6 In the *Internet Protocol (TCP/IP)* window, click **Advanced**. The *Advanced TCP/IP Settings* window opens displaying the *IP Settings* tab.
- 7 In the *IP addresses* section, click **Add**. The *TCP/IP Address* window opens.
- 8 In the *TCP/IP Address* window, enter the new IP address and the Subnet mask of the network, and click **Add**.
- 9 To confirm the addition of a new IP address, in the *Advanced TCP/IP Settings* window, verify that the new IP address is displayed.

The new IP address is successfully added to your server's network card.



# Integrating custom scripts with Ensim Pro

## Introduction

This chapter provides guidelines on how to integrate custom scripts that are run, when a site is added, edited, or deleted using Ensim Pro. Topics in this chapter include:

- “About the custom scripts” on page 3-1
- “Before you integrate the custom scripts” on page 3-1
- “Enabling the custom scripts integration feature” on page 3-2

## About the custom scripts

You can integrate custom scripts on the Ensim Pro server that are run, when a site is added, edited, or deleted using Ensim Pro. These custom scripts allow you to perform any additional tasks after the site operation has completed.

Each site operation is associated with a particular script name as mentioned below:

- Add site operation: **customaddsite.vbs**
- Edit site operation: **customeditsite.vbs**
- Delete site operation: **customdeletesite.vbs**

When each custom script is called by Ensim Pro after the corresponding site operation, the following list of parameters is passed to it:

- **<site domainname>**: Domain name of the site.
- **<site adminname>**: Site administrator’s username for logging in to the Ensim Pro control panel.
- **<site adminpassword>**: Site administrator’s password for logging in to the Ensim Pro control panel.

## Before you integrate the custom scripts

Before you integrate the custom scripts with Ensim Pro, keep the following points in mind:

- The custom script is run only after all the actions of the corresponding site operation are **successful**. If any action of the site operation fails, the custom script is not run. When the script is run, the *Action Log* page in the Ensim Pro control panel for that site operation displays that the script has been initialized.
- The **return code** of the custom script does not affect the status of the corresponding site operation. Even if the script fails, the site operation does not fail.

- After the corresponding site operation has completed successfully, it runs the custom script, but **does not wait** for the script to complete.
- Since the custom scripts are run in the context of the **System** user on the Ensim Pro server, it cannot display any dialog box to the user on the screen. If the script tries to display a dialog box on the screen that requires a user's input, the server stops responding to any further requests.
- Since **cscript** is used for running the custom scripts, ensure that the location of **cscript.exe** is added to the Windows path variable.

## Enabling the custom scripts integration feature

To enable the custom scripts integration feature, the custom scripts **must** be present in the **customscripts** directory on the Ensim Pro server.

### Procedure

To enable the custom scripts integration feature:

- 1 Log in to the Ensim Pro server as the administrator.
- 2 Go to the `<install_dir>` directory, where `<install_dir>` is the location of the Ensim Pro installation directory. If default settings were used during the Ensim Pro installation, the directory path is **C:\Program Files\Ensim\WEBpliance**.
- 3 Create a **customscripts** directory in `<install_dir>`.
- 4 Depending on the site operation for which you want to run the custom script, copy the appropriate scripts to the **customscripts** directory.
  - Add site operation: **customaddsite.vbs**
  - Edit site operation: **customeditsite.vbs**
  - Delete site operation: **customdeletesite.vbs**

The custom scripts feature is enabled. You can now test it by performing the corresponding site operations in the Ensim Pro control panel.

# Index

## A

- adding a new IP address 2-5
- adding a reseller 1-4
- adding a site 1-4
- adding a user 1-8
- adding a user template 1-5
  - description of parameters 1-7

## C

- changing network settings of your server 2-1, 3-1
- Command Line Interface (CLI) calls 1-1
  - executing 1-3
  - overview 1-1
- custom scripts
  - about 3-1
  - before you integrate 3-1
  - integrating the scripts 3-2

## D

- deleting a reseller 1-9
- deleting a site 1-9
- deleting a user 1-10
- deleting a user template 1-10
- displaying the information of a reseller 1-11
- displaying the information of a site 1-11

## E

- exporting a site 1-24

## I

- IMail configuration after changing FQDN 2-5
- importing a site 1-24
- integrating custom scripts 3-1

## N

- Networkconfiguration utility 2-1

- using its command line interface (CLI) 2-4
- using its graphical interface 2-1

## P

- parent username and password 1-2

## R

- reseller
  - adding 1-4
  - deleting 1-9
  - displaying information 1-11
  - updating 1-12

## S

- site
  - adding 1-4
  - deleting 1-9
  - displaying information 1-11
  - exporting 1-25
  - importing 1-26
  - updating 1-13

## U

- updating a reseller 1-12
- updating a site 1-13
  - description of parameters 1-17
- updating a user 1-22
  - description of parameters 1-7
- updating the Ensim Pro license 1-27
- user
  - adding 1-8
  - deleting 1-10
  - updating 1-22
- user template
  - adding 1-5
  - deleting 1-10





# ENSIM PRO - WINDOWS

**ENSIM CORPORATION**

1366 Borregas Avenue  
Sunnyvale, California 94089  
[www.ensim.com](http://www.ensim.com)

